

### Product Description

Engine generator moulded case circuit breakers are designed specifically for application on diesel engine powered standby generators where high interrupting circuit breakers are not required. The JG through NG breakers are equipped with a special trip unit, that includes standard thermal (overload) protection and special low magnetic pickup range (FG includes a fixed thermal/magnetic pickup). The standard thermal trip unit provides overload protection for conductors per the National Electric Code. The low magnetic pickup range is approximately two to five times the continuous rating and provides closer low level short circuit protection when applied on generators that have very low short circuit capacity. This combination allows the user to customize the breaker to the generator output.

Engine Generator Circuit Breakers are suitable for reverse feed applications.

### Catalogue Numbering System

This information is presented only as an aid to understanding catalogue numbers. It is not to be used to build catalogue numbers for circuit breakers.

FG breakers include both line and load side terminals.

JG and KG breakers with "W" catalogue number suffix do not include any terminals.

JG, KG, LG, and NG breakers without "W" catalogue number suffix include both line and load terminals.

Contact Cutler-Hammer for additional ratings and internal/external accessories.

### Technical Data and Specifications

#### CSA C22.2 No. 5 and UL 489 Interrupting Capacity Ratings

Interrupting Capacity (Symmetrical Amperes)	
Volts Ac (50/60 Hz)	
240	18,000
480	14,000
600	10,000

#### IEC 947-2 Interrupting Capacity Ratings

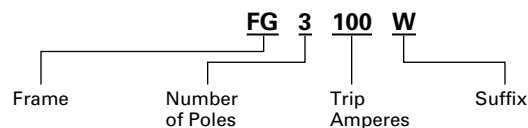
Interrupting Capacity (Symmetrical Amperes)	
Volts Ac (50/60 Hz)	
220, 240	18,000/9,000
380, 415	14,000/7,000
660, 690	10,000/5,000

### Standards and Certifications

Engine generator moulded case circuit breakers are designed to conform with the following standards:

- Underwriters Laboratories, Inc., Standard UL 489, Moulded Case Circuit Breakers and Circuit Breaker Enclosures File E7819
- Canadian Standards Association Standard C22.2 No. 5, Service Entrance and Branch Circuit Breakers
- International Electrotechnical Commission Recommendations IEC 947-2, Circuit Breakers

Conformance with these standards satisfies most local and international codes, assuming user acceptability and simplified application.



Frame	Number of Poles	Trip Amperes	Suffix
FG	3	15	W: Without Terminals
		20	
		25	
		30	
		35	
		40	
		45	
		50	
		60	
		70	
		80	
		90	
		100	
		125	
		150	
JG		175	
		200	
		225	
		250	
KG		300	
		350	
		400	
LG		450	
		500	
		600	
NG		700	
		800	
		900	
		1000	
		1200	

**Product Selection**

The following table lists FG through NG engine generator breakers with the maximum generator kVA and kW rating. Engine generator breakers are

applied at 115% of the generator full load current rating. The maximum kW rating is based on three-phase generators at 80% power factor.

Magnetic Pickup Range	Maximum Generator Rating 60 Hz						Engine Generator Breaker Catalogue Number
	240 Vac		480 Vac		600 Vac		
	kVA <sup>①</sup>	kW <sup>②</sup>	kVA <sup>①</sup>	kW <sup>②</sup>	kVA <sup>①</sup>	kW <sup>②</sup>	
Fixed	5	4	11	9	14	11	<b>FG3015</b>
Fixed	7	6	14	12	18	14	<b>FG3020</b>
Fixed	9	7	18	14	23	18	<b>FG3025</b>
Fixed	11	9	22	17	27	22	<b>FG3030</b>
Fixed	13	10	25	20	32	25	<b>FG3035</b>
Fixed	14	12	29	23	36	29	<b>FG3040</b>
Fixed	16	13	32	26	41	32	<b>FG3045</b>
Fixed	18	14	36	29	45	36	<b>FG3050</b>
Fixed	22	17	43	35	54	43	<b>FG3060</b>
Fixed	25	20	51	40	63	51	<b>FG3070</b>
Fixed	29	23	58	46	72	58	<b>FG3080</b>
Fixed	32	26	65	52	81	65	<b>FG3090</b>
Fixed	36	29	72	58	90	72	<b>FG3100</b>
Fixed	40	32	79	64	99	79	<b>FG3110</b>
Fixed	45	36	90	72	113	90	<b>FG3125</b>
Fixed	54	43	108	87	135	108	<b>FG3150</b>
Fixed	63	51	126	101	158	126	<b>FG3175</b>
Fixed	72	58	144	116	181	144	<b>FG3200</b>
Fixed	81	65	162	130	203	162	<b>FG3225</b>
350-700	63	51	126	101	158	126	<b>JG3175W<sup>③</sup></b>
350-700	72	58	144	116	181	144	<b>JG3200W<sup>③</sup></b>
350-700	81	65	162	130	203	162	<b>JG3225W<sup>③</sup></b>
350-700	90	72	181	144	226	181	<b>JG3250W<sup>③</sup></b>
500-1000	108	87	217	173	271	217	<b>KG3300W<sup>③</sup></b>
500-1000	126	101	253	202	316	253	<b>KG3350W<sup>③</sup></b>
1000-2000	144	116	289	231	361	289	<b>KG3400W<sup>③</sup></b>
500-2500	162	130	325	260	406	325	<b>LG3450</b>
500-2500	181	144	361	289	451	361	<b>LG3500</b>
500-2500	217	173	433	347	542	433	<b>LG3600</b>
500-2500	253	202	505	404	632	505	<b>NG3700</b>
500-2500	289	231	578	462	722	578	<b>NG3800</b>
1250-5000	325	260	650	520	812	650	<b>NG3900</b>
1250-5000	361	289	722	578	903	722	<b>NG31000</b>
1250-5000	433	347	867	693	1083	867	<b>NG31200</b>

① Breaker continuous current is based on 115% of the generator full load ampere rating.

② Based on three-phase generators at 80% power factor.

③ Without terminals.

Enclosures

Enclosure Description

Type 1 General Purpose

- Surface or Flush Mounting
- 15-1200 Ampere Range
- 600 Volts Ac, 500 Volts Dc

Type 1 enclosed breakers are designed for use in commercial buildings, apartment buildings and other areas where a general purpose enclosure is applicable. The breaker is front operable and is capable of being padlocked in either the On or Off position. Ratings through 1200 amperes are listed with CSA and Underwriters Laboratories, Inc. as approved for service entrance application. Both surface and flush mounted enclosures are available.

Type 3R Rainproof Surface Mounting

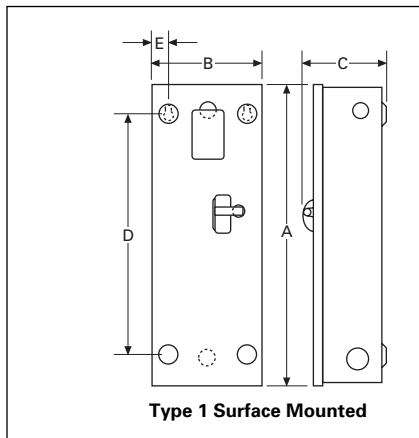
- Interchangeable Hubs (Through 400 Amperes)
- 15-1200 Ampere Range
- 600 Volts Ac, 500 Volts Dc

This general purpose outdoor service center employs a circuit breaker inside a weatherproof sheet steel breaker enclosure to serve as a main disconnect and protective device for feeder circuits. Ratings through 1200 amperes are listed by CSA and Underwriters Laboratories, Inc. as suitable for service entrance application.

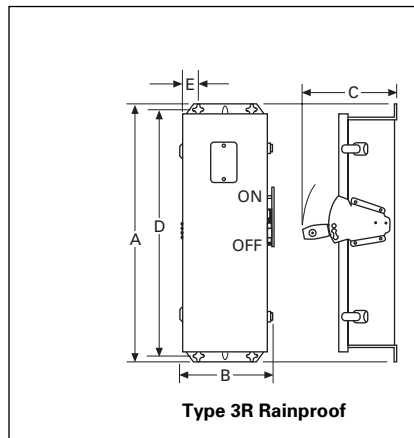
Type 12 Dustproof Surface Mounting

- No Knockouts or Other Openings
- 15-1200 Ampere Range
- 600 Volts Ac, 500 Volts Dc

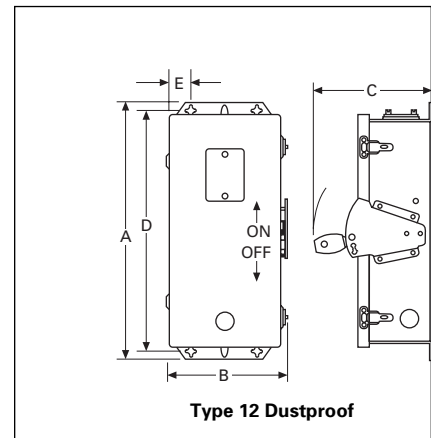
The Type 12 enclosure is designed in line with specifications for special industry application where unusually severe conditions involving oil, coolant, dust and other foreign materials exist in the operating atmosphere. The handle padlocks in the Off position and the cover is interlocked with the handle mechanism to prevent opening the cover with the circuit breaker in the On position. Ratings through 1200 amperes are listed by CSA and U.L., Inc. as suitable for service entrance application.



Type 1 Surface Mounted



Type 3R Rainproof



Type 12 Dustproof

Enclosure Selection Data

Breaker Frame (Amperes)	Enclosure Type Class	Dimensions										App. Wt. Lbs.	Conduit Sizes, Inches	Catalogue Number
		A		B		C		D		E				
		Inches	mm	Inches	mm	Inches	mm	Inches	mm	Inches	mm			
FG 15-225	Type 1	23.25	591	8.41	214	6.28	160	18.75	476	1.20	31	15	.25, .50, .75, 1, 1.25, 1.50, 2, 2.50	SFDN225 RFDN225 JFDN225
	Type 3R	25.66	652	8.84	225	9.31	237	24.28	617	1.70	43	19		
	Type 12	25.66	652	8.84	226	9.31	238	24.28	618	1.70	43	18		
JG 175-250	Type 1	34.70	881	10.92	227	7.20	183	30.00	762	1.88	48	31	.25, .50, 2, 2.50, 3	SJDN250 RJDN250 JJDN250
	Type 3R	37.50	891	11.56	294	10.22	260	35.77	909	1.94	49	40		
	Type 12	37.53	953	11.56	294	10.22	260	35.77	909	1.94	49	37		
KG 300-400	Type 1	38.81	986	11.06	281	10.94	278	34.00	869	2.28	58	53	.25, .50, .75, 1.50, 2, 2.50, 3, 3.50	SKDN400 RKDN400 JKDN400
	Type 3R	41.69	997	11.75	298	14.06	357	39.90	1014	1.97	50	60		
	Type 12	41.69	997	11.75	298	14.06	357	39.90	1015	1.97	50	53		
LG 450-600	Type 1	45.88	1165	14.31	364	12.38	314	46.56	1183	1.91	48	81	.25, .50, .75, 3, 3.50, 4	SLDN600 RLDN600 JLDN600
	Type 3R	48.31	1227	14.91	379	15.50	394	46.56	1183	1.92	49	84		
	Type 12	48.31	1227	14.91	379	15.50	394	46.56	1183	1.92	49	81		
NG 700-1200	Type 1	61.22	1555	21.44	545	15.41	391	61.84	1571	1.97	50	178		SNDN1200 RNDN1200 JNDN1200
	Type 3R	63.59	1615	22.00	559	17.63	448	61.84	1571	1.97	50	175		
	Type 12	63.59	1615	22.00	559	17.63	448	61.84	1571	1.97	50	170		

**Accessories**

**Standard Terminals**

Breaker Frame	Maximum Ampere Rating	AWG Wire Range	Metric Wire Range mm <sup>2</sup>	Catalogue Number
FG	100	#14-1/0	2.5 -50	<b>3T100FB</b> ①
FG	150	#4-4/0	25 -95	<b>3TA225FD</b> ①
JG	250	#4-350 kcmil	25 -185	<b>TA250KB</b>
KG	350	250-500 kcmil	120 -240	<b>TA350K</b>
KG	400	3/0-250 kcmil (2)	95 -120	<b>3TA400K</b> ①
LG	600	250-500 kcmil (2)	120 -240	<b>3TA603LDK</b> ①
NG	700	1-500 kcmil (2)	50 -300	<b>TA700NB1</b>
NG	1000	3/0-400 kcmil (3)	95 -185	<b>TA1000NB1</b>
NG	1200	4/0-500 kcmil (4)	120 -300	<b>TA1200NB1</b>

**Internal Accessories**

Breaker Frame	Auxiliary Switch		Shunt Trip	
	1A-1B Catalogue Number	2A-2B Catalogue Number	Rating	Catalogue Number
FG	<b>A1X1PK</b>	<b>A2X1PK</b>	12-24 Vdc	<b>SNT1LP03K</b>
JG	<b>A1X2PK</b>	<b>A2X2PK</b>	12-24 Vdc	<b>SNT2P04K</b>
KG	<b>A1X3PK</b>	<b>A2X3PK</b>	12-24 Vdc	<b>SNT3P04K</b>
LG	<b>A1X4PK</b>	<b>A2X4PK</b>	12-24 Vdc	<b>SNT4LP03K</b>
NG	<b>A1X5RPK</b>	<b>A2X5RPK</b>	12-24 Vdc	<b>SNT5LP03K</b>

**Neutral Kits, Insulated and Groundable**

Maximum Enclosure Rating (Amperes)	Catalogue Number	Main Lug Number Size Cu/Al	# of Lugs	Ground Lug Size Cu/Al	# of Lugs
100	<b>N100</b>	(1) #14 - 1/0	2	(1) #14 - #4	2
250	<b>N250</b>	(1) #6 - 350MCM	2	(1) #14 - 1/0	2
400	<b>N400</b>	(2) 3/0 - 250MCM	2	(1) #6 - 300MCM	2
600	<b>N600</b>	(2) #1 - 500MCM	2	(1) #6 - 250MCM	3
1200	<b>N1200</b>	(4) #2 - 600MCM	2	(1) #6 - 250MCM	3

① Package of 3 terminals.

October 1997  
Mailed to: E/29-100A

Time/Current Characteristic Curves

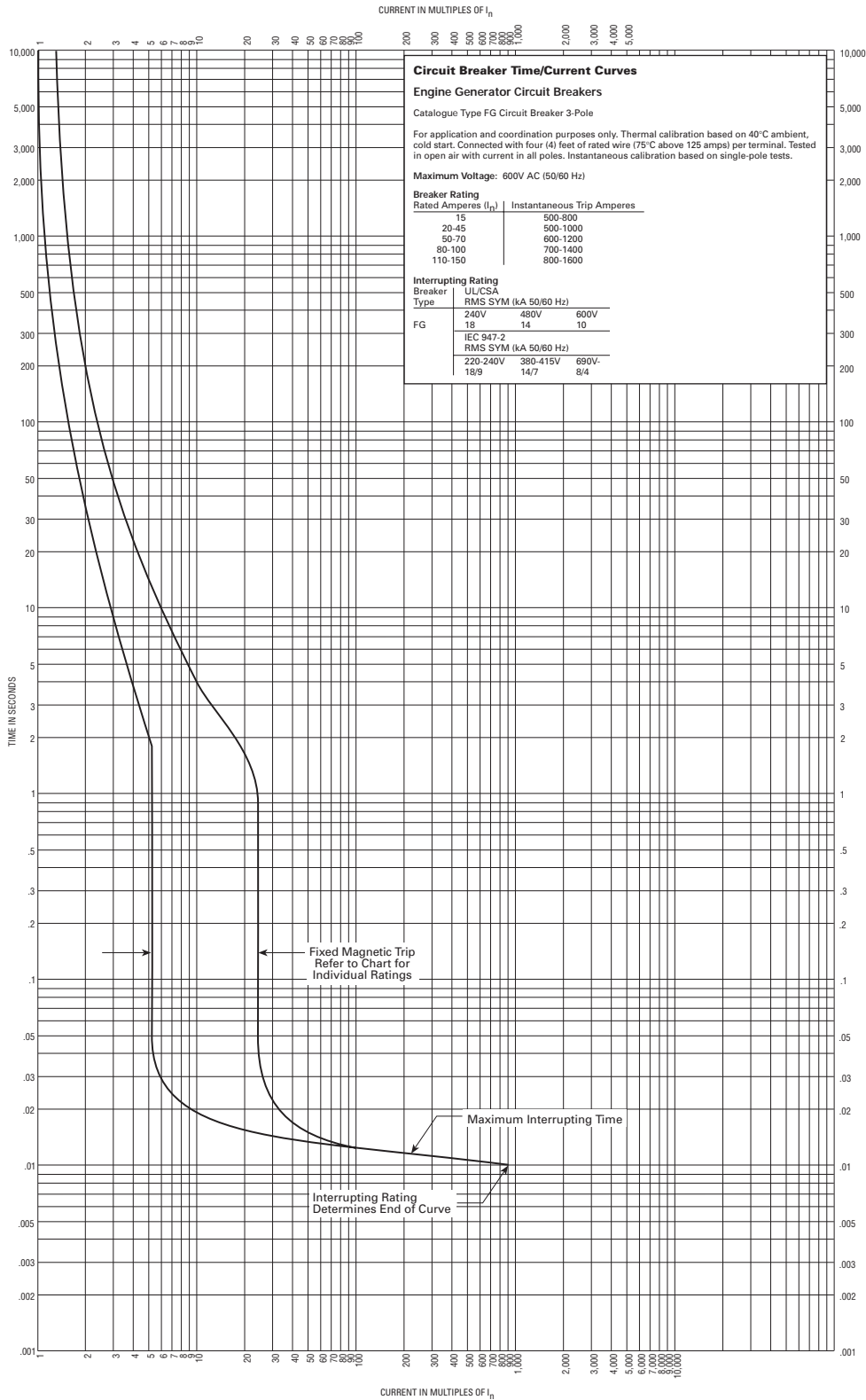
# Moulded Case Circuit Breakers Engine Generator

<u>Breaker Description</u>	<u>Curve No.</u>	<u>Page</u>
Type FG 15-150 Amperes .....	SC-6195-95	2
Type JG 175-250 Amperes .....	SC-6196-95	3
Type KG 300-400 Amperes .....	SC-6197-95	4
Type LG 450 Amperes .....	SC-6198-95	5
Type LG 500 Amperes .....	SC-6199-95	6
Type LG 600 Amperes .....	SC-6200-95	7
Type MG 700 Amperes .....	SC-6201-95	8
Type MG 800 Amperes .....	SC-6202-95	9
Type NG 900 Amperes .....	SC-6203-95	10
Type NG 1000 Amperes .....	SC-6204-95	11
Type NG 1200 Amperes .....	SC-6205-95	12



# Engine Generator Circuit Breakers

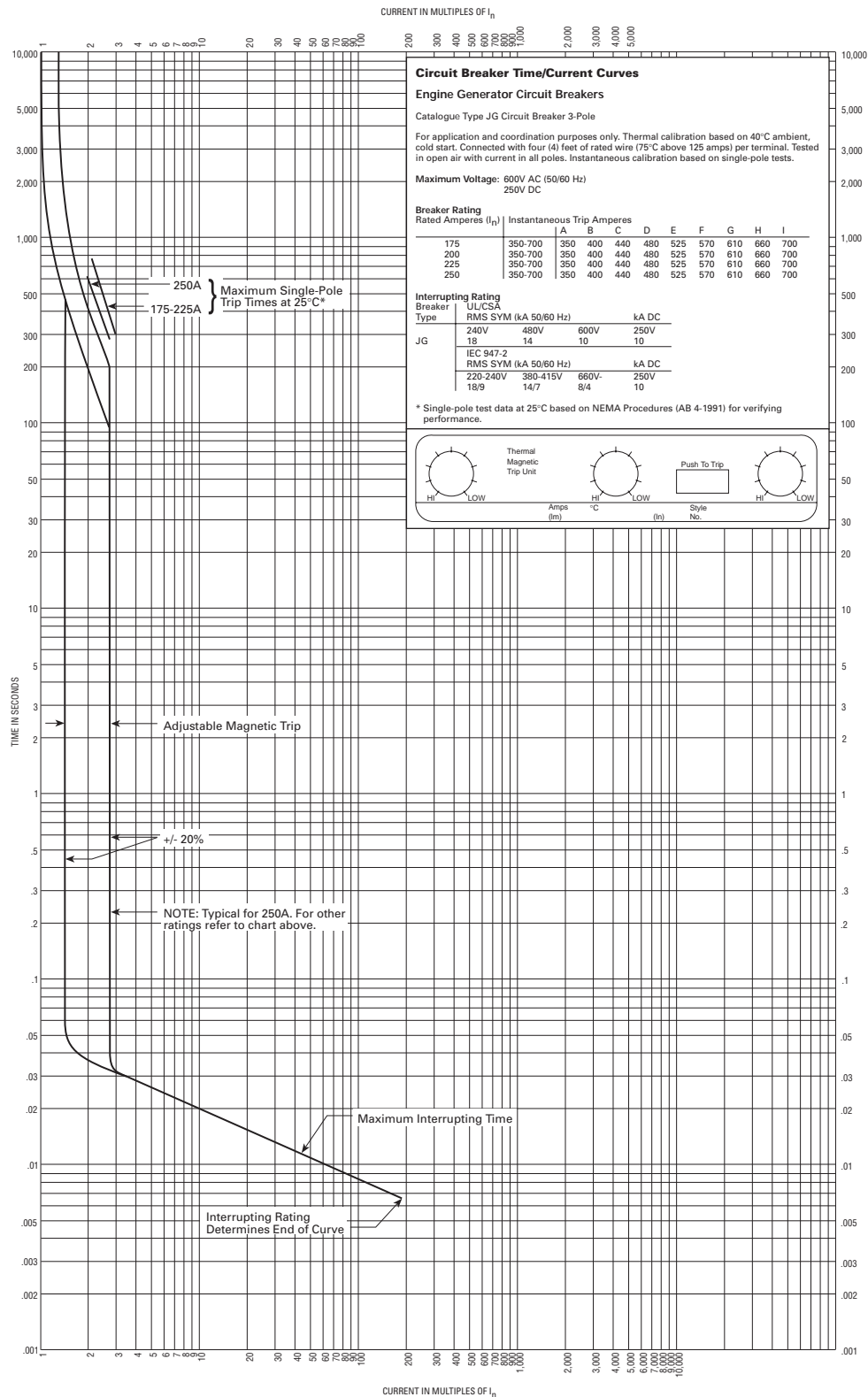
## Type FG 15-150 Amperes

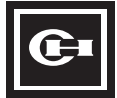




# Engine Generator Circuit Breakers

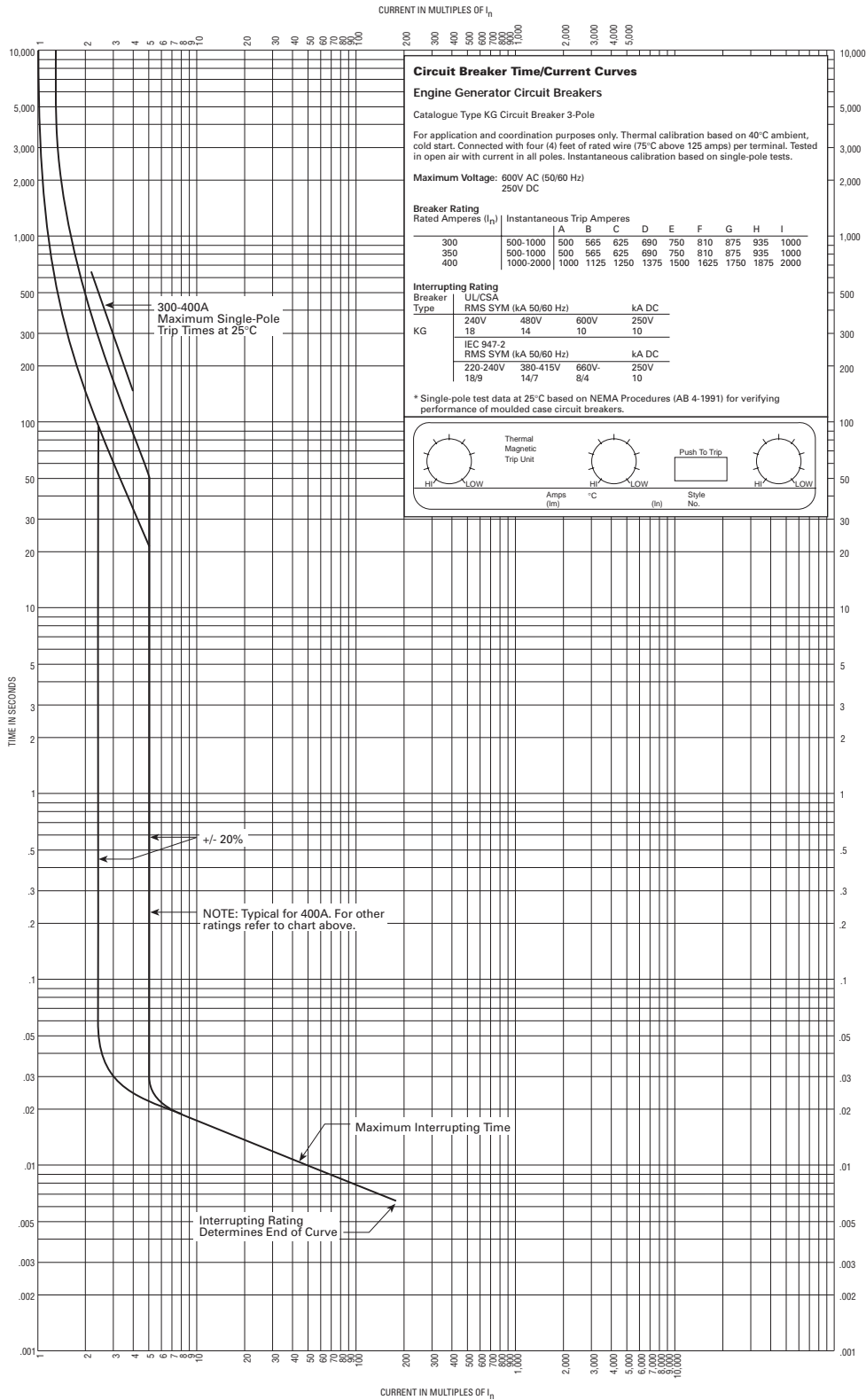
## Type JG 175-250 Amperes





# Engine Generator Circuit Breakers

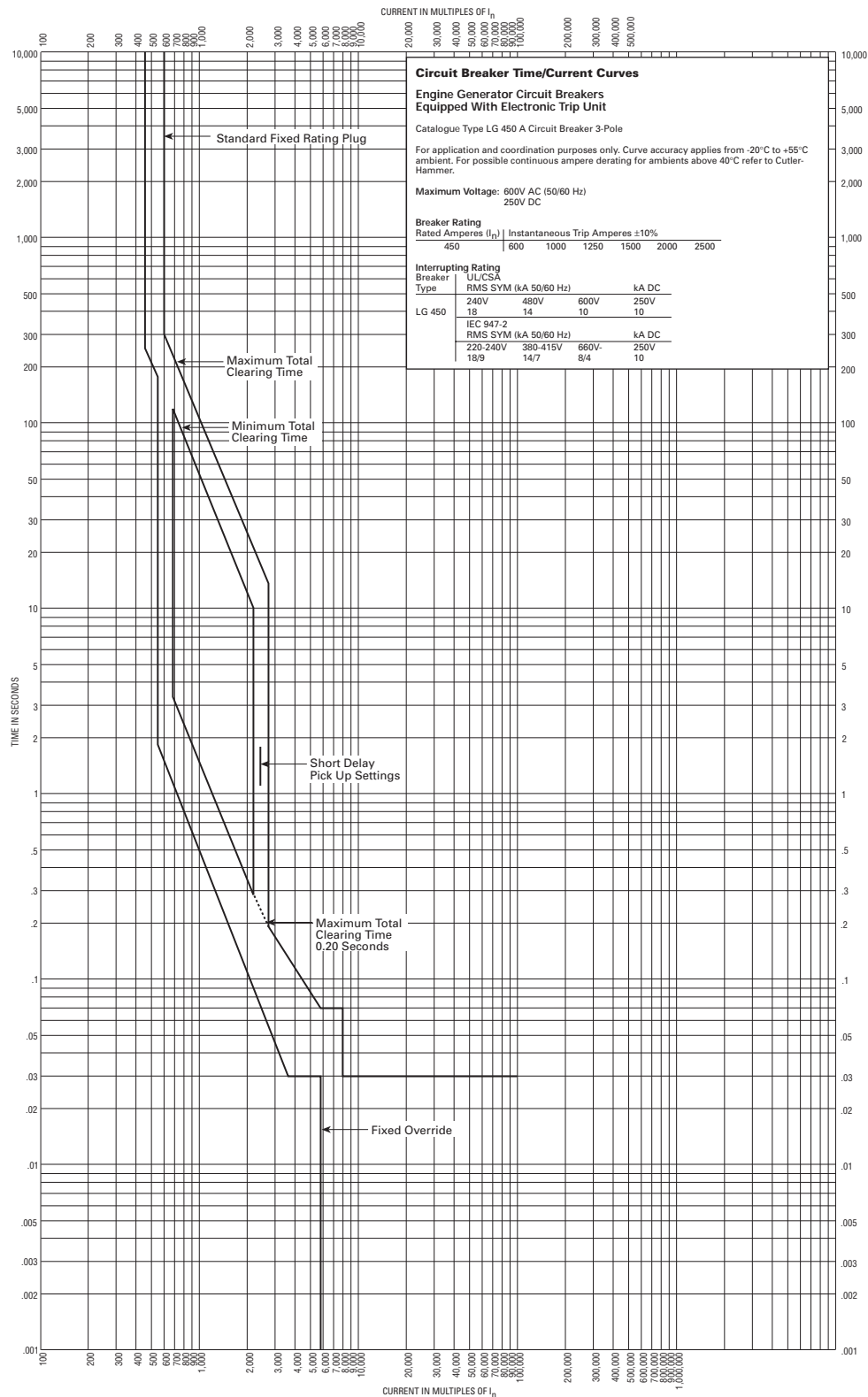
Type KG 300-400 Amperes





# Engine Generator Circuit Breakers

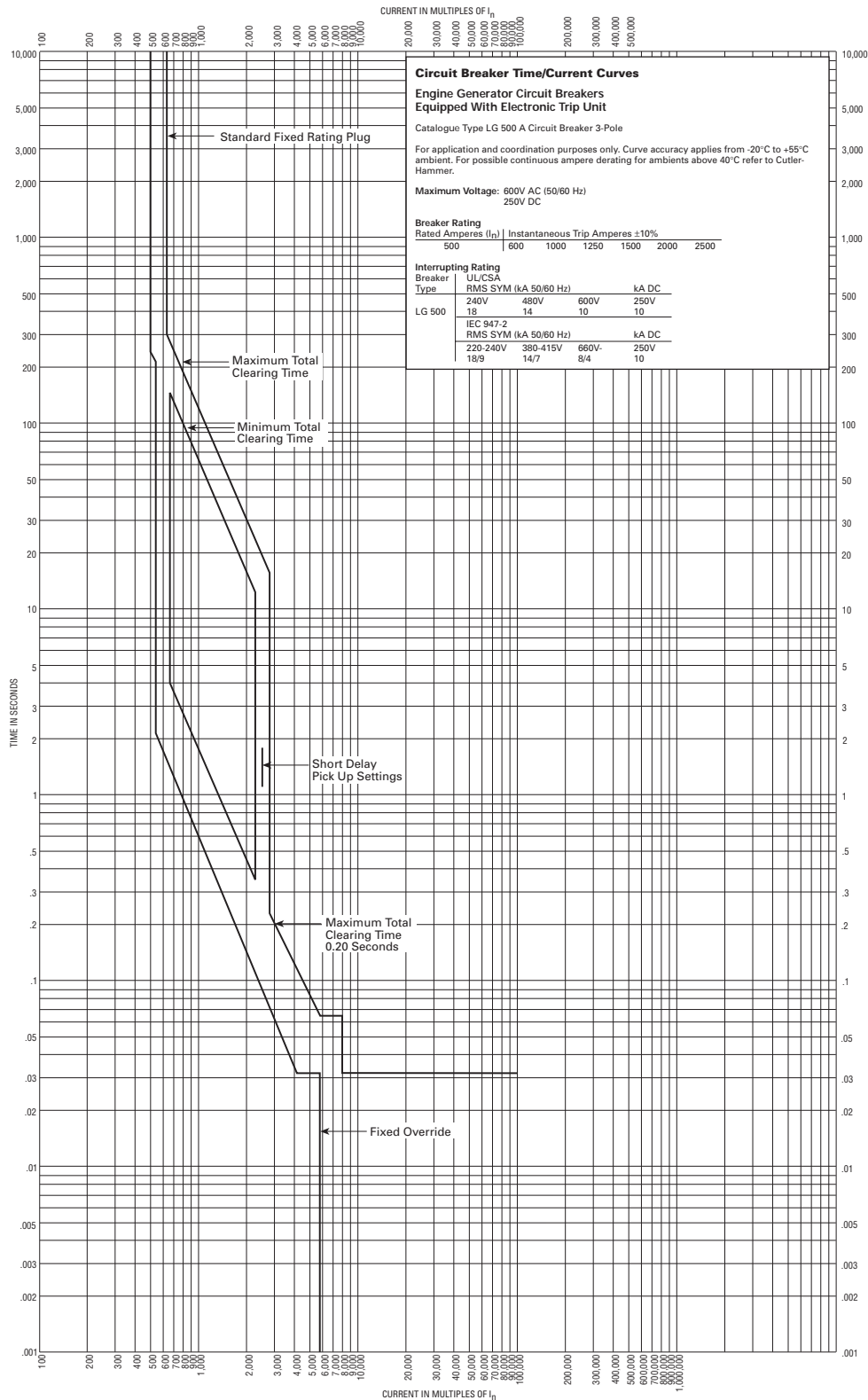
## Type LG 450 Amperes Equipped with Electronic Trip Unit





# Engine Generator Circuit Breakers

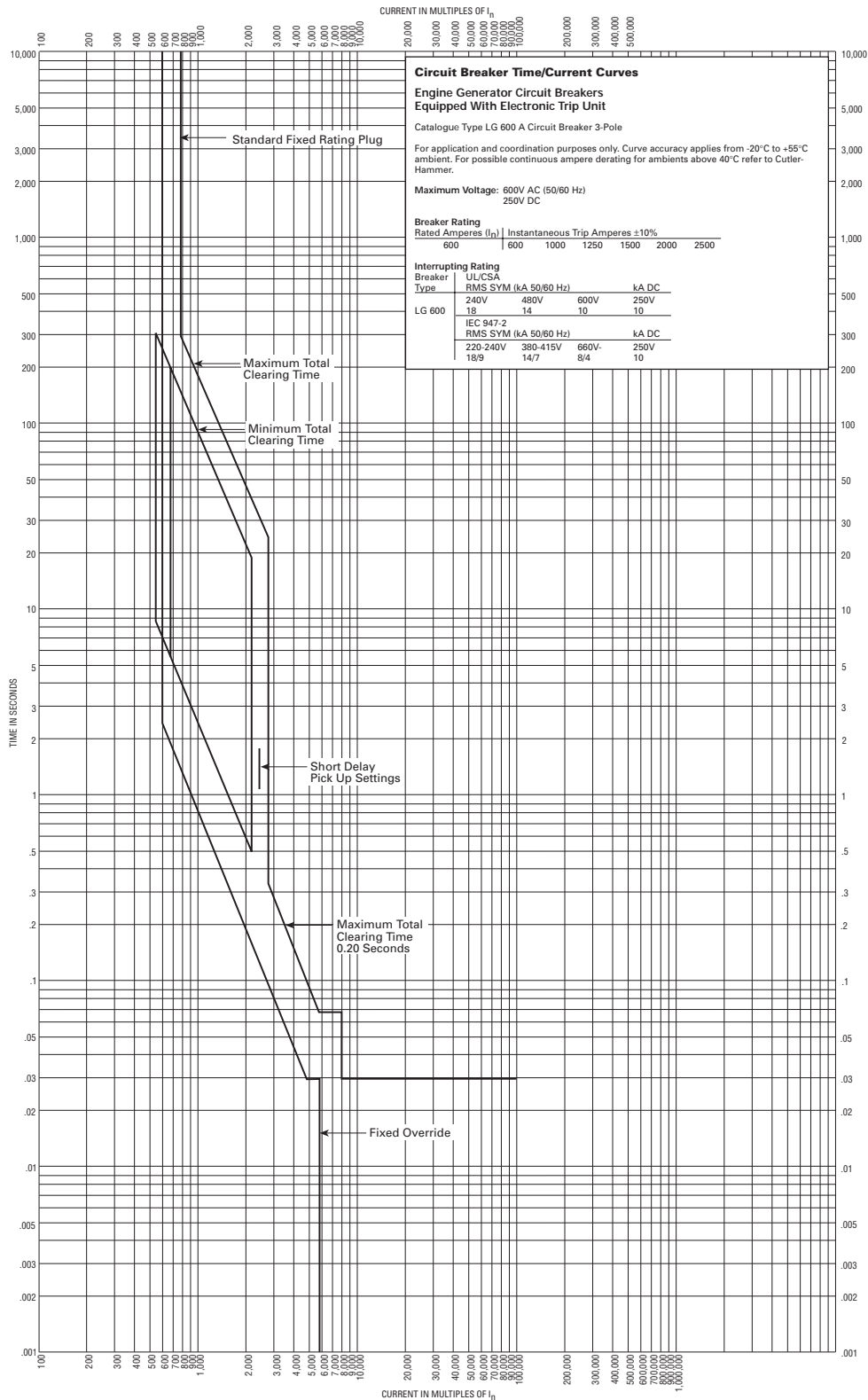
## Type LG 500 Amperes Equipped with Electronic Trip Unit





# Engine Generator Circuit Breakers

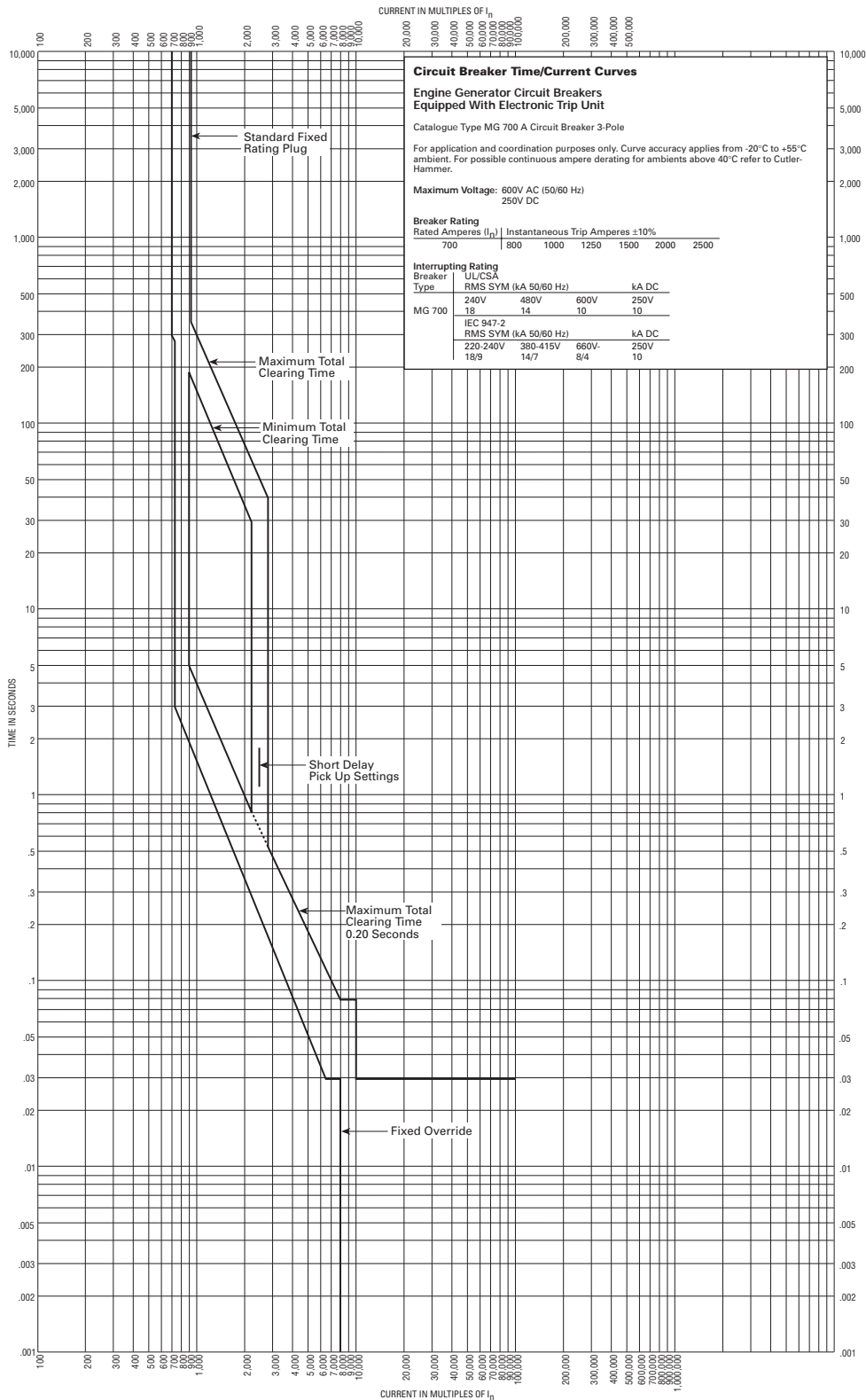
## Type LG 600 Amperes Equipped with Electronic Trip Unit





# Engine Generator Circuit Breakers

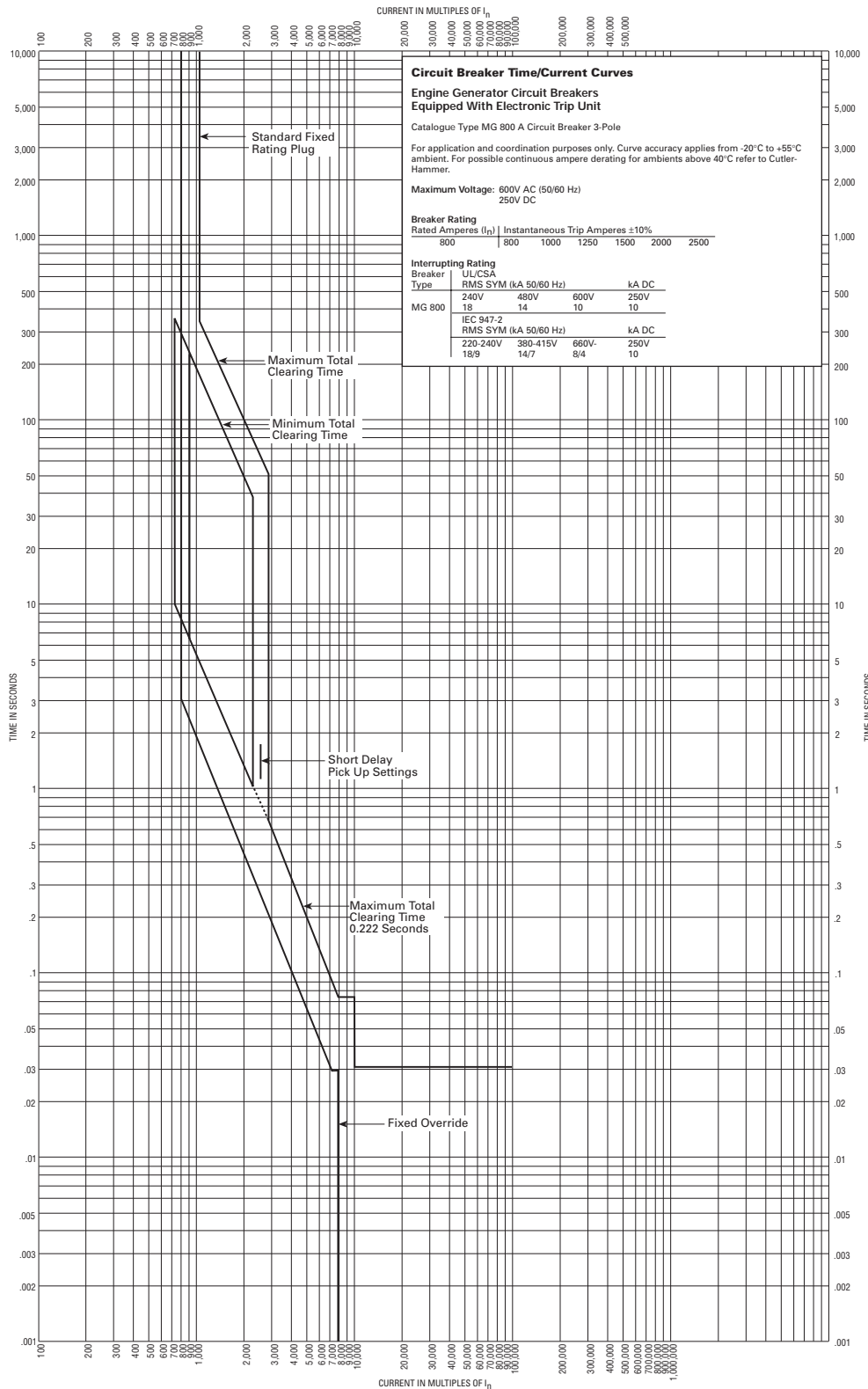
## Type MG 700 Amperes Equipped with Electronic Trip Unit





# Engine Generator Circuit Breakers

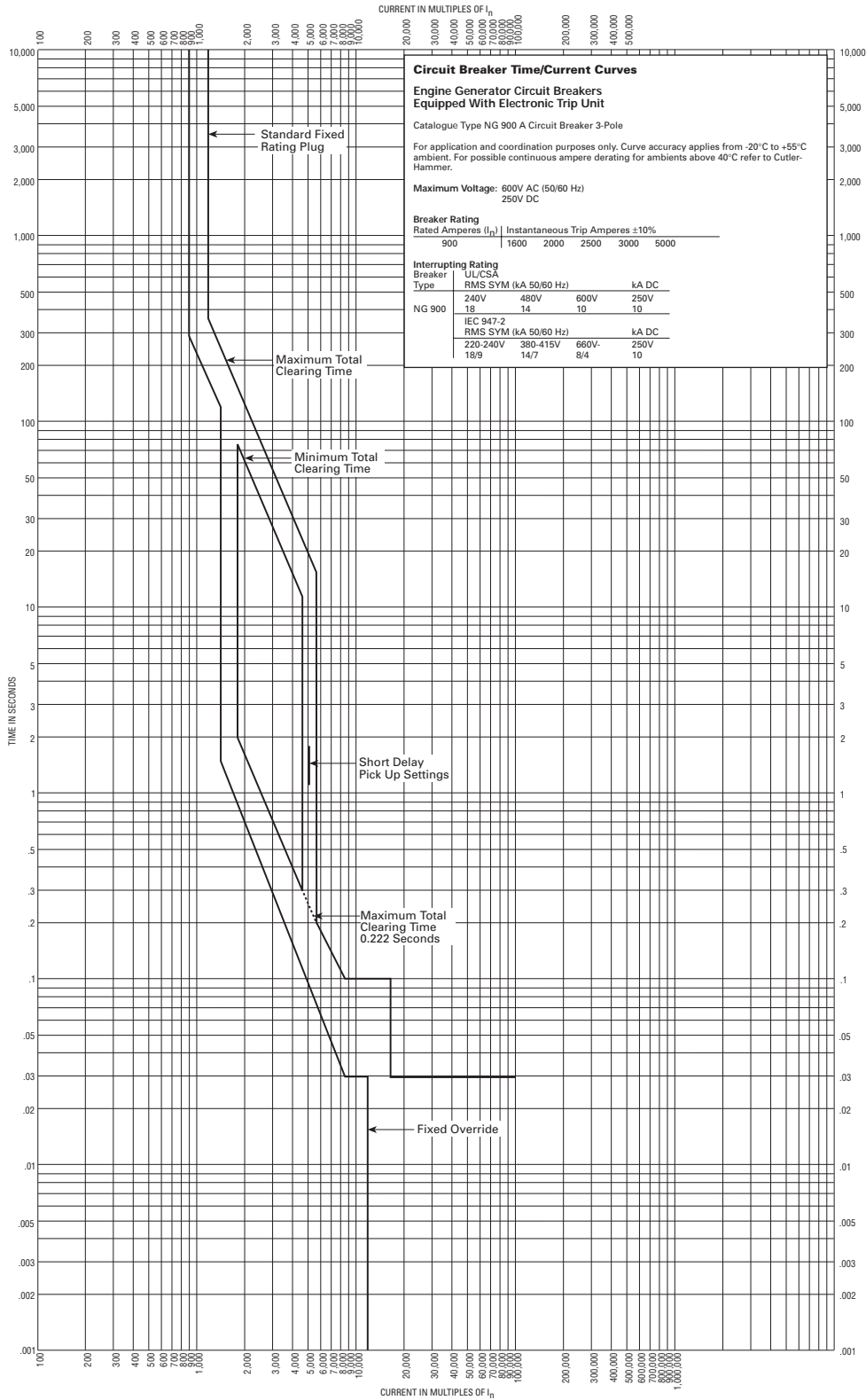
## Type MG 800 Amperes Equipped with Electronic Trip Unit





# Engine Generator Circuit Breakers

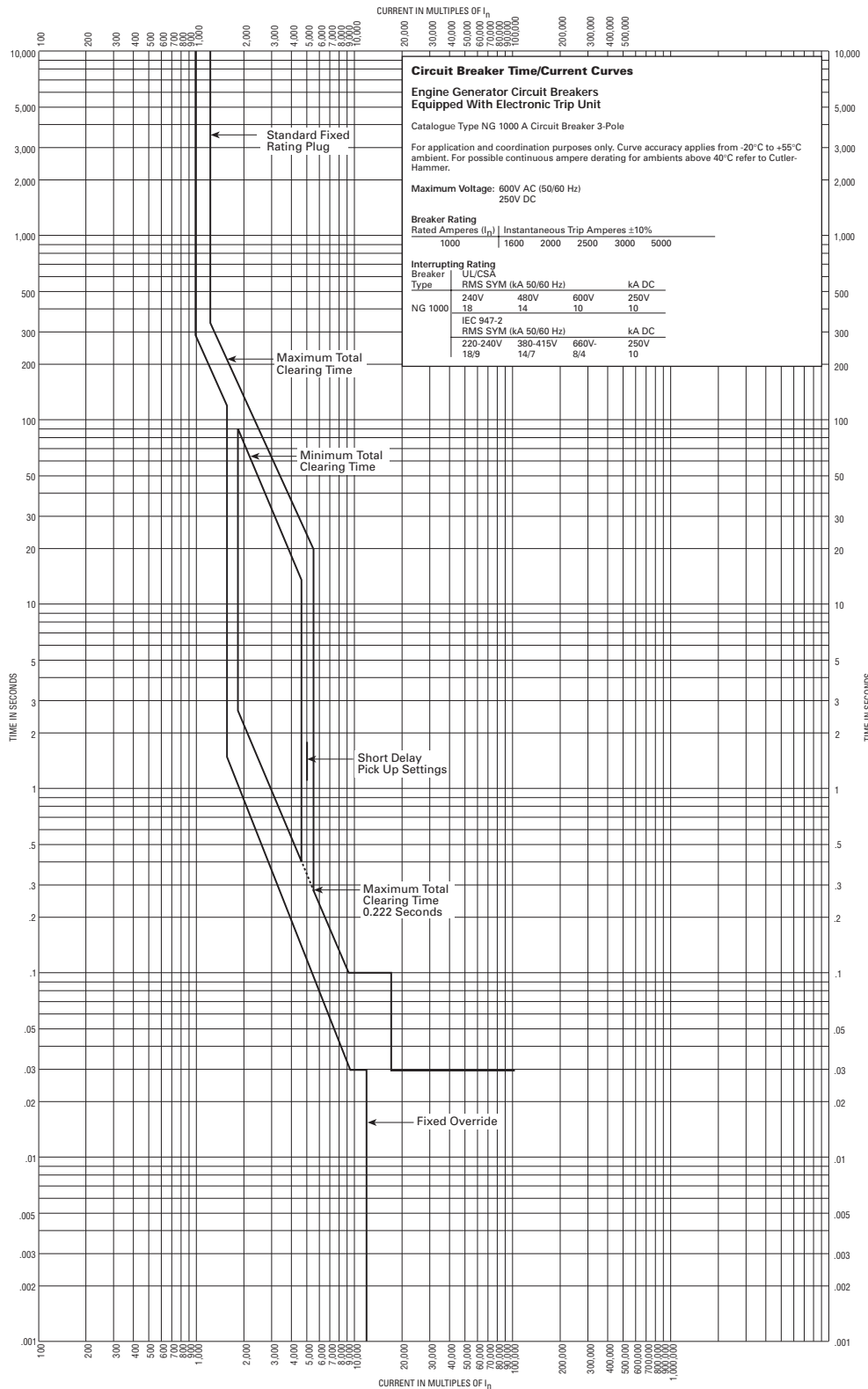
## Type NG 900 Amperes Equipped with Electronic Trip Unit





# Engine Generator Circuit Breakers

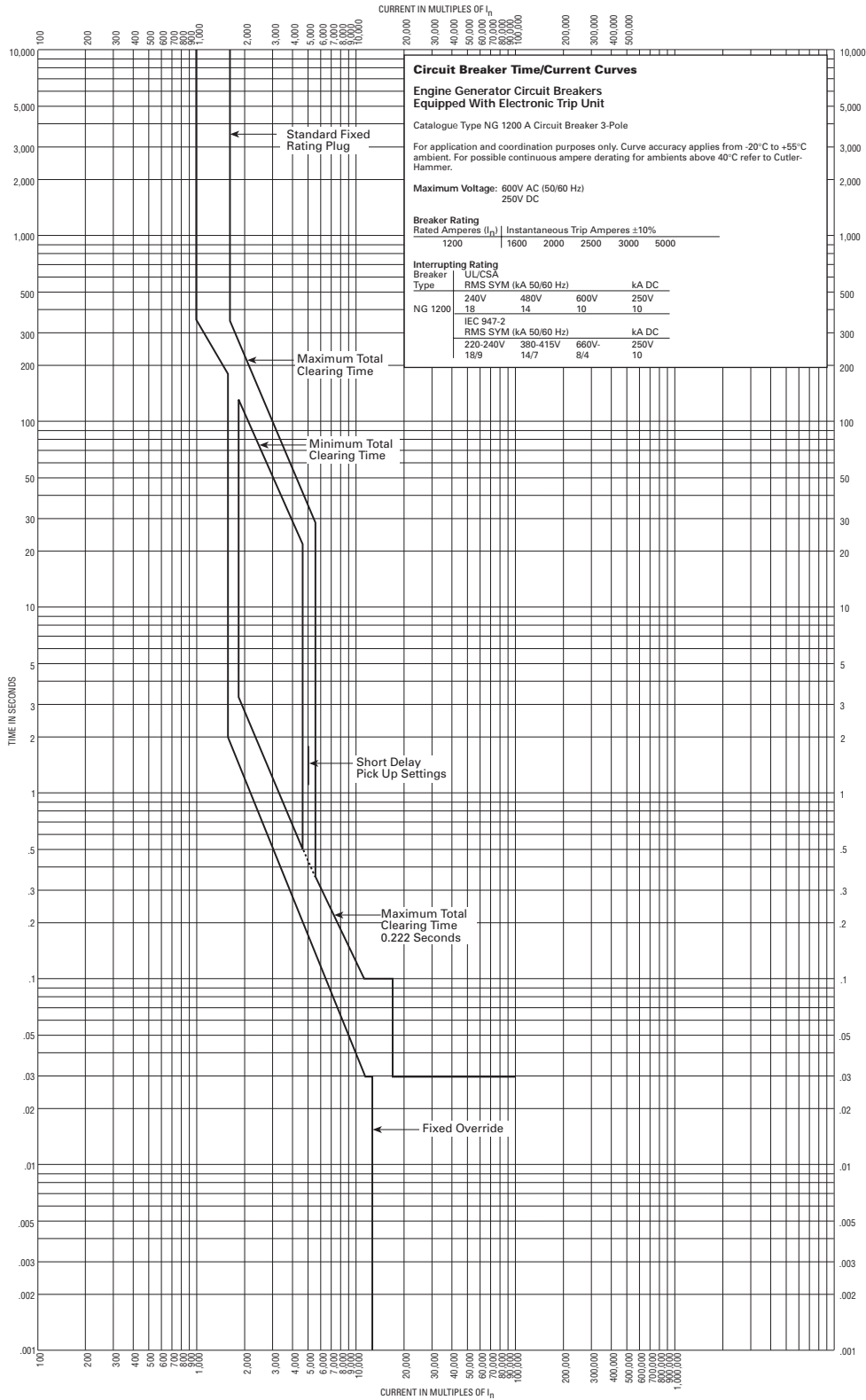
## Type NG 1000 Amperes Equipped with Electronic Trip Unit





# Engine Generator Circuit Breakers

## Type NG 1200 Amperes Equipped with Electronic Trip Unit



**Cutler-Hammer**

Five Parkway Center  
 Pittsburgh, Pennsylvania, U.S.A. 15220

Curve No. SC-6205-95

October 1997  
Mailed to: E, D, C/29-100A, 31-400A,  
31-500A

# Moulded Case Circuit Breakers Engine Generator FG 15-150 Amperes

---

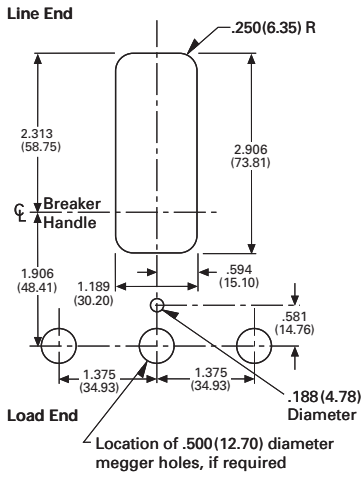
<u>Breaker Description</u>	<u>Page</u>
Type FG Three-Pole .....	1
Type JG Three-Pole .....	3
Type KG Three-Pole .....	5
Type LG Three-Pole .....	7
Type MG Three-Pole .....	9
Type NG Three-Pole .....	11



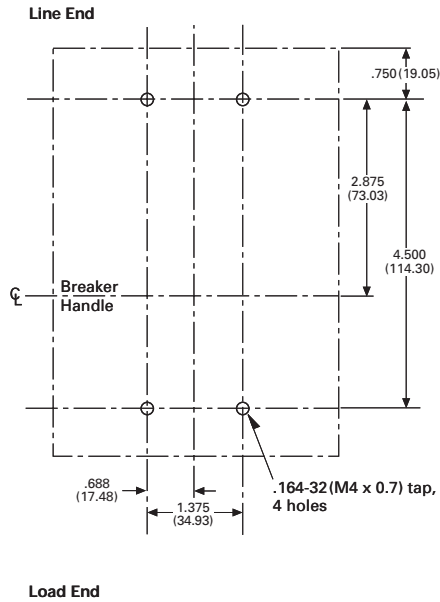


**Moulded Case Circuit Breakers, FG Engine Generator**  
 Type FG Three-Pole

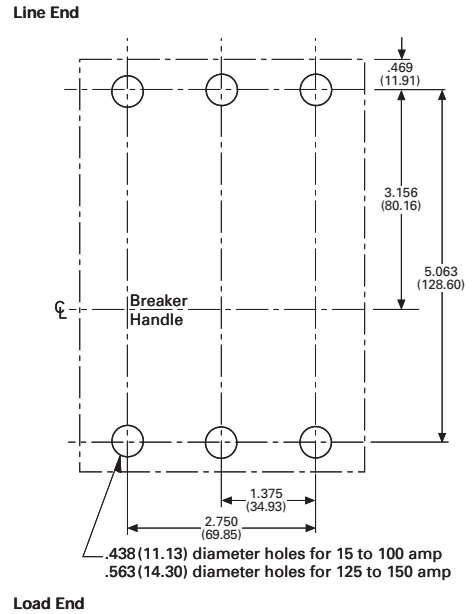
**Front Cover Cutout**



**Drilling Plans**  
 Front Connected



**Rear Connected**



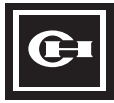
Reproduced from drawings 1490D63 and 1490D67

Dimensions in parentheses in millimeters

**Cutler-Hammer**

Five Parkway Center  
 Pittsburgh, Pennsylvania, U.S.A. 15220





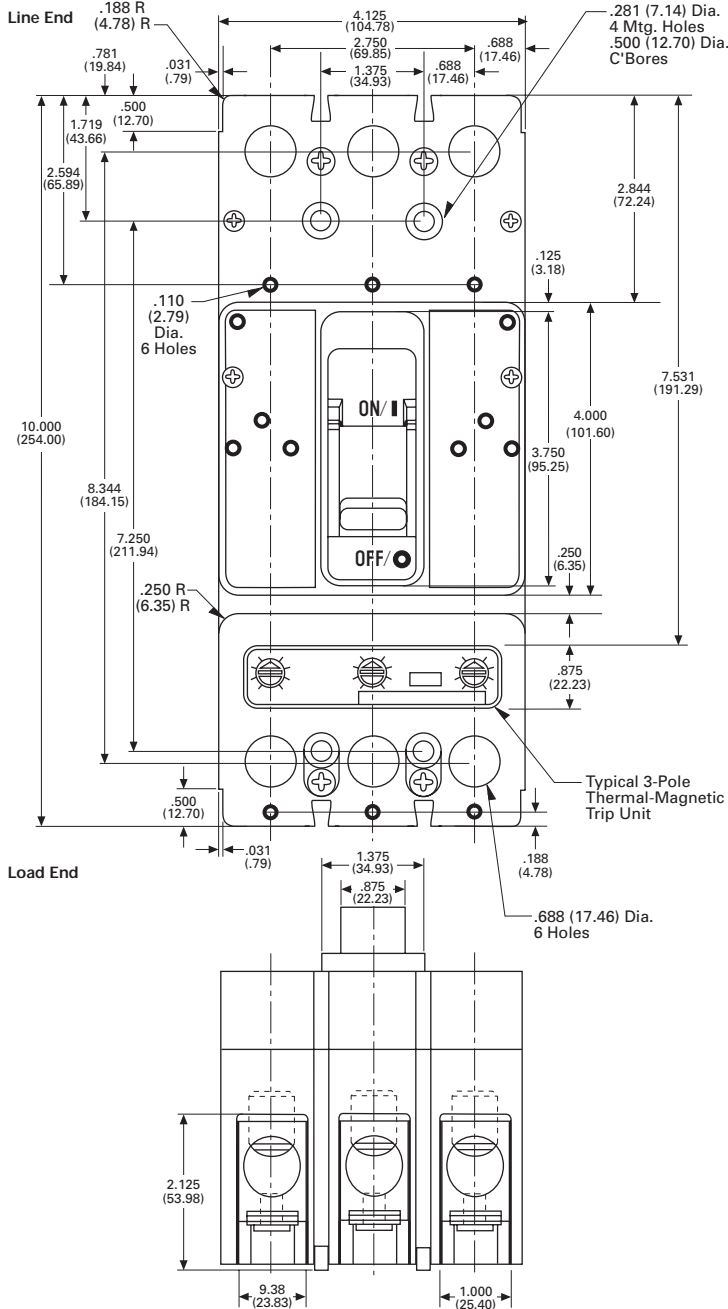
October 1997  
Mailed to: E, D, C/29-100A, 31-400A,  
31-500A

Type JG Three-Pole

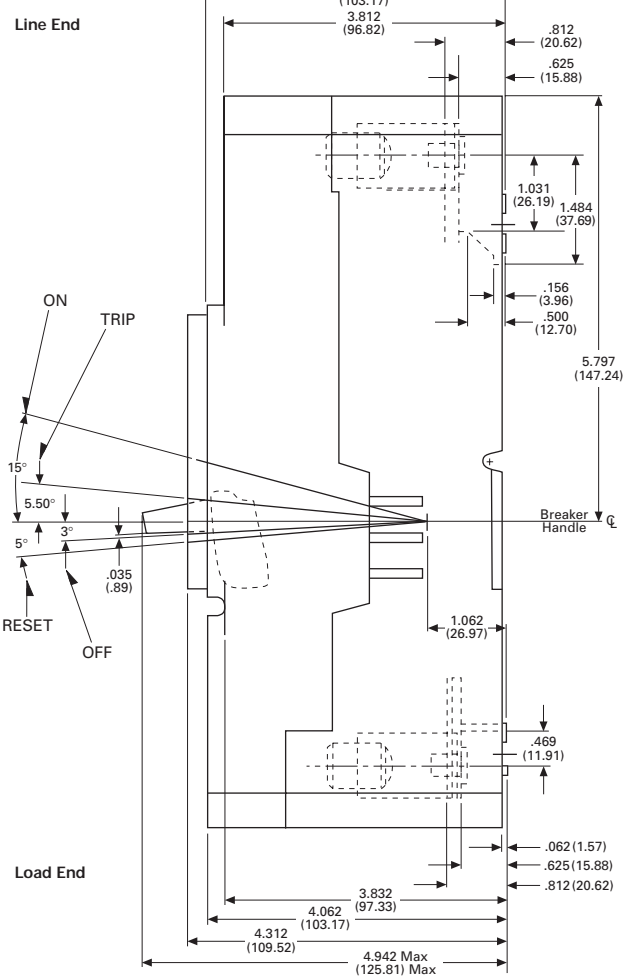
# Moulded Case Circuit Breakers Engine Generator JG 175-250 Amperes

## Type JG Three-Pole

### Front View



### Side View



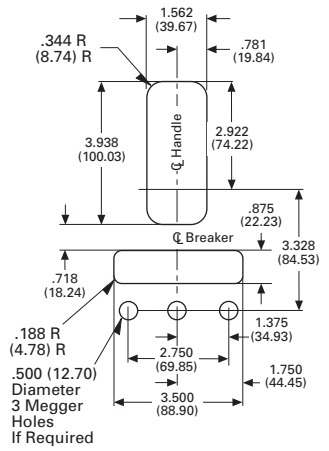
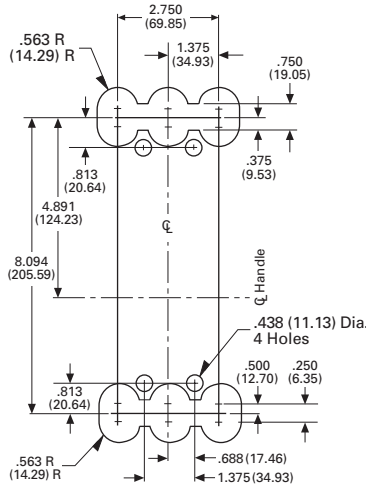
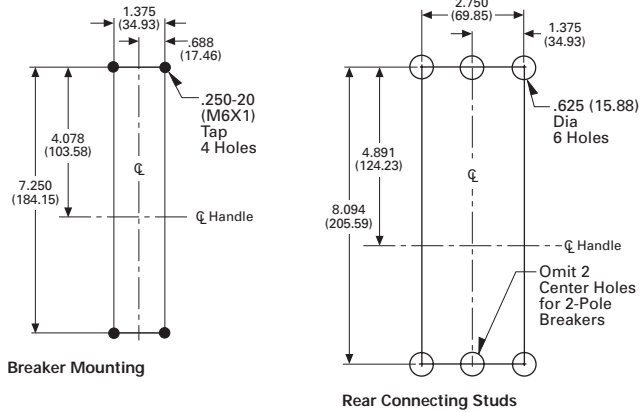
### Front Connected Terminals

Catalogue Number	Cable	Amp Rating	Wire Size	Torque
T250KB	Cu Single	70-250	#4 to 350 MCM	180 Lb-in (20.3 Nm)
TA250KB	Cu-Al Single	70-250	#4 to 350 MCM	275 Lb-in (31.1 Nm)



**Moulded Case Circuit Breakers, JG Engine Generator  
 Type JG Three-Pole**

**Drilling Plans**

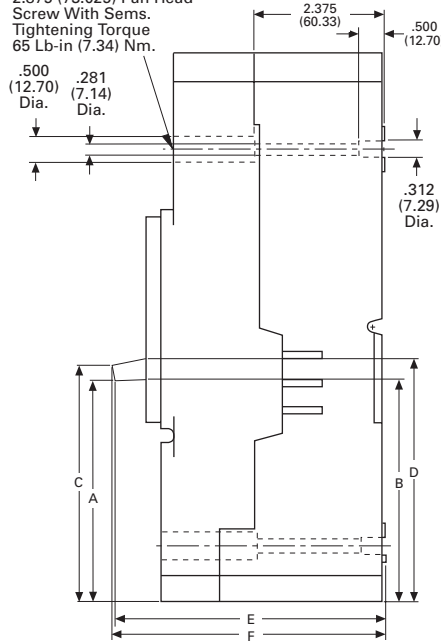


Breaker Mounting

Rear Connecting Studs

**Drawout Support Blocks**

Breaker Mounting Holes Use .250-20 (M6X1) X 2.875 (73.025) Pan Head Screw With Sems. Tightening Torque 65 Lb-in (7.34) Nm.

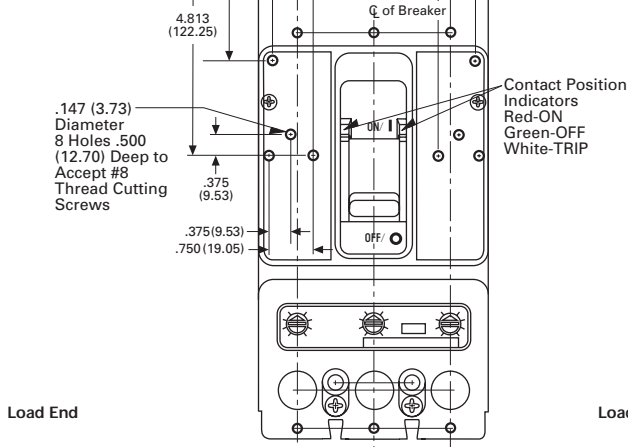


**Front Cover Cutout**

**Breaker Shown in OFF Position**

**Line End**

**Line End**



**Load End**

**Load End**

Reproduced from drawings 1491D65 and 1491D67

Breaker Status	Dimension						Hdl. Oper. Force
	A	B	C	D	E	F	
On	5.24 (132.10)	5.12 (130.05)	5.54 (140.72)	5.49 (139.45)	4.77 (121.56)	4.72 (119.89)	32 Lb. (142.3 Nm)
Tripped	4.79 (121.67)	4.71 (119.63)	5.10 (129.54)	5.10 (129.54)	4.87 (123.70)	4.85 (123.19)	
Off	4.02 (102.11)	4.06 (103.12)	4.33 (109.82)	4.45 (113.03)	4.91 (124.71)	4.95 (125.73)	22 Lb. (97.9 Nm)
Reset	3.91 (99.31)	3.96 (100.58)	4.21 (106.93)	4.36 (110.74)	4.90 (124.46)	4.95 (125.73)	38 Lb. (169.0 Nm)

Dimensions in parentheses in millimeters

**Cutler-Hammer**

Five Parkway Center  
 Pittsburgh, Pennsylvania, U.S.A. 15220





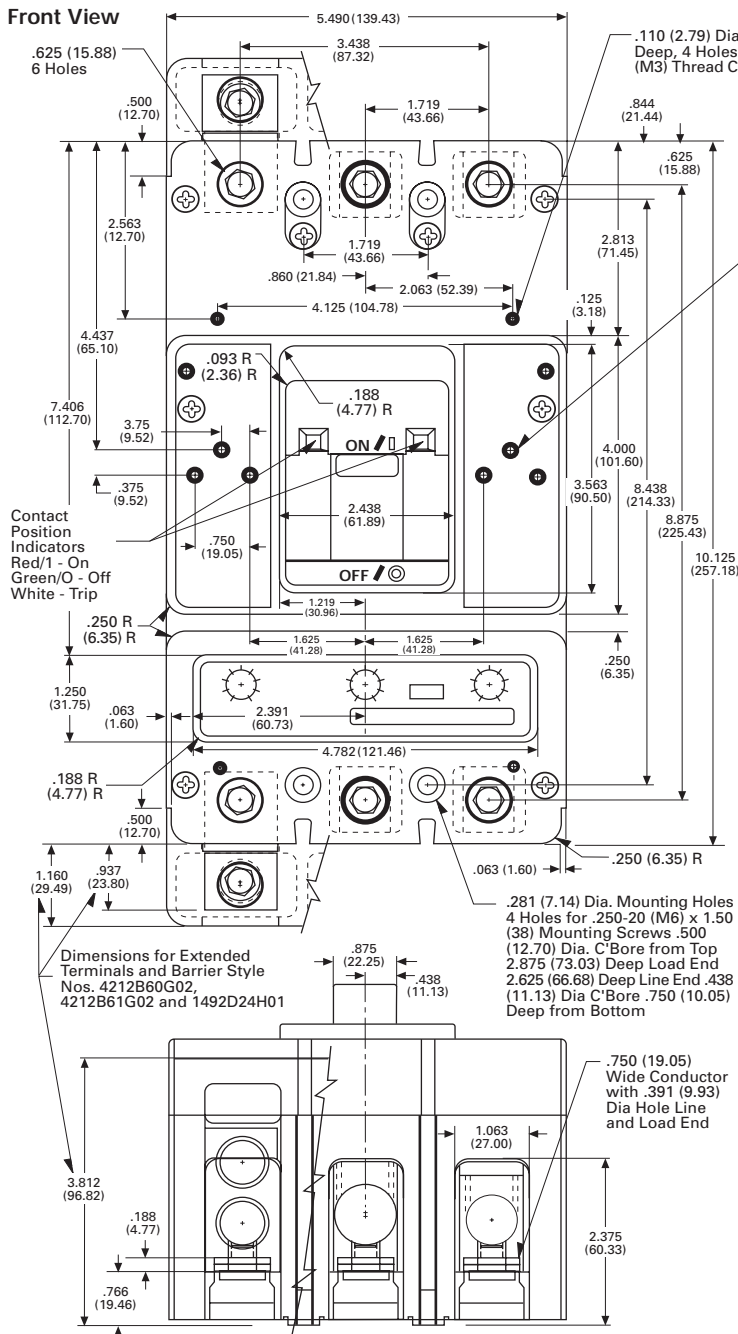
October 1997  
Mailed to: E, D, C/29-100A, 31-400A,  
31-500A

Type KG Three-Pole

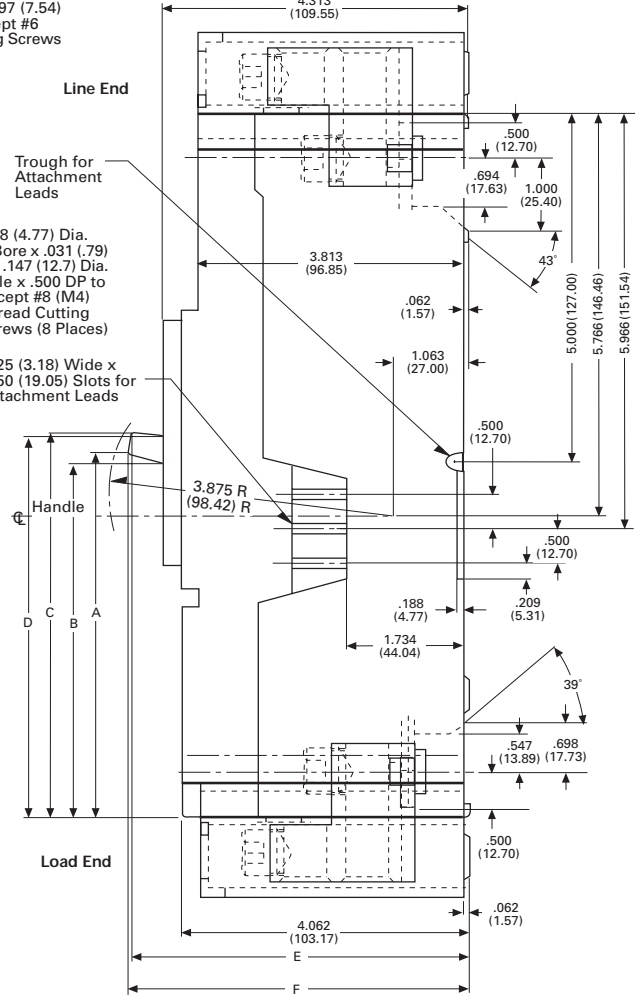
# Moulded Case Circuit Breakers Engine Generator KG 300-400 Amperes

## Type KG Three-Pole

### Front View



### Side View



Breaker Status	Dimensions						Handle Force <sup>①</sup>
	A	B	C	D	E	F	
On	5.39 (136.9)	5.20 (132.1)	5.69 (144.5)	5.61 (142.5)	4.72 (119.9)	4.77 (121.2)	30 lbs. (13.61 kgs.)
Tripped	4.77 (121.2)	4.69 (119.1)	5.08 (129.0)	5.11 (129.8)	4.89 (124.2)	4.89 (124.2)	—
Off	4.16 (105.7)	4.21 (106.9)	4.46 (113.3)	4.64 (117.9)	4.95 (125.7)	4.91 (124.7)	25 lbs. (11.34 kgs.)
Reset	4.07 (103.4)	4.14 (105.2)	4.57 (116.1)	4.56 (115.8)	4.95 (125.7)	4.90 (124.5)	35 lbs. (15.87 kgs.)

① All handle forces measured approximately 0.125 (3.17) from top of handle.

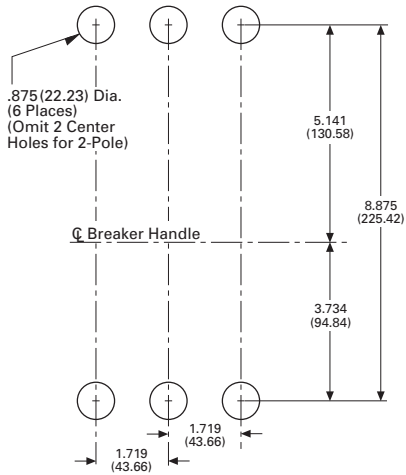
Reproduced from drawings 1492D64 and 1492D68  
Dimensions in parentheses in millimeters



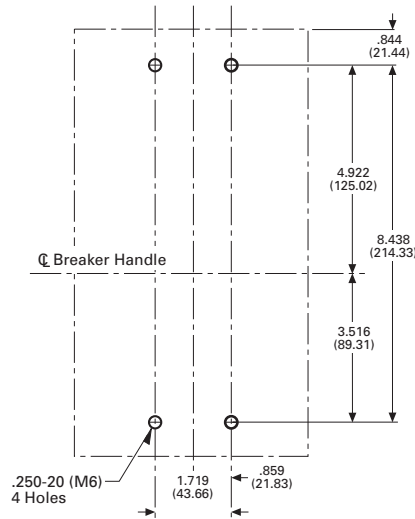


**Moulded Case Circuit Breakers, KG Engine Generator**  
**Type KG Three-Pole**

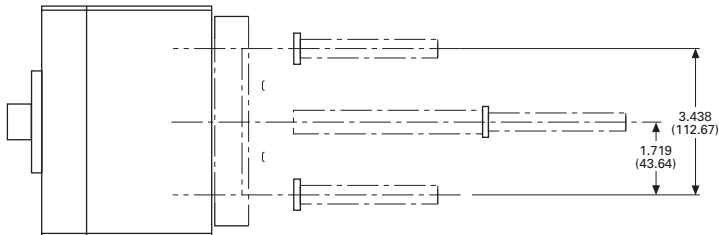
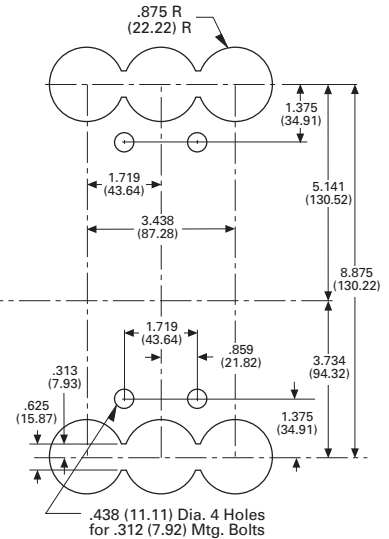
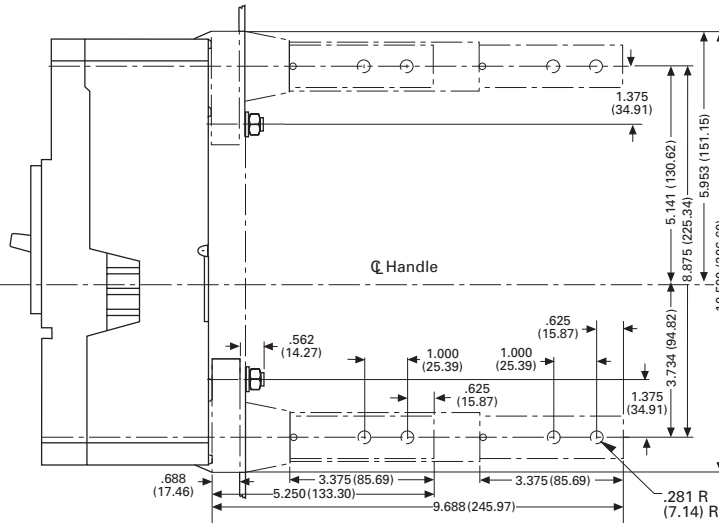
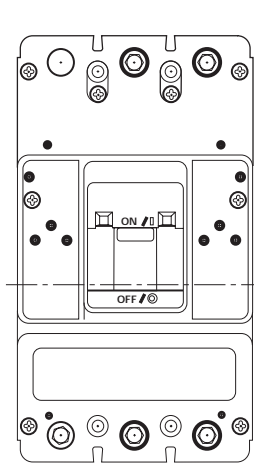
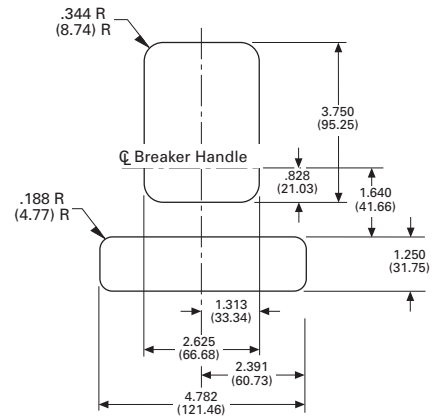
**Rear Connected Studs**



**Front Connected Terminals**



**Front Cover Cutout**



Reproduced from drawings 1492D63 and 1492D67  
 Dimensions in parentheses in millimeters

**Cutler-Hammer**

Five Parkway Center  
 Pittsburgh, Pennsylvania, U.S.A. 15220





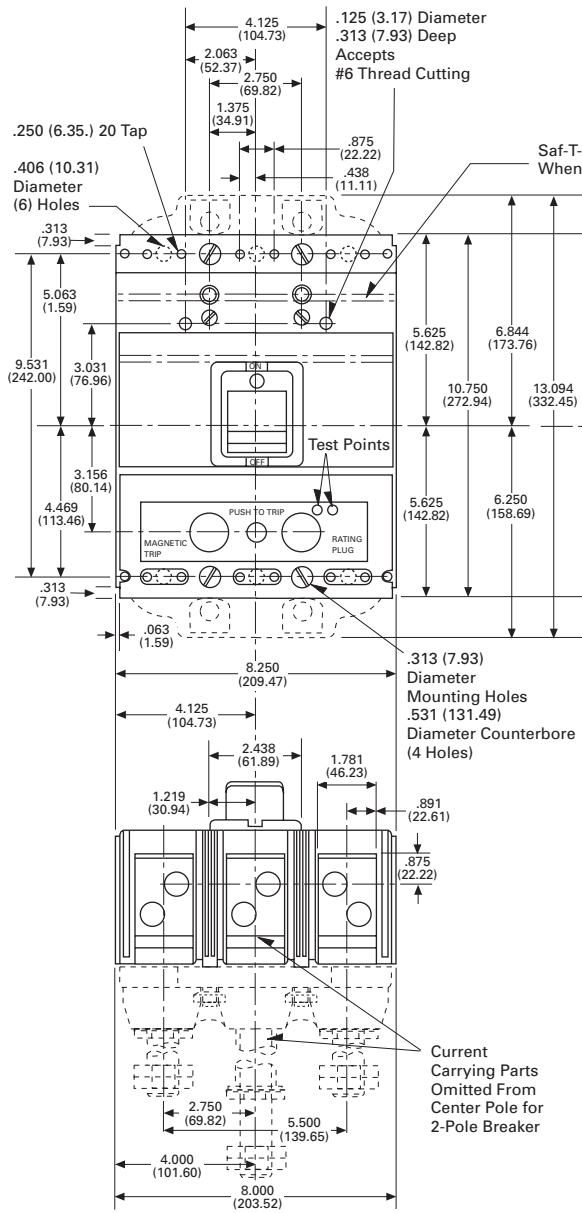
October 1997  
Mailed to: E, D, C/29-100A, 31-400A,  
31-500A

Type LG Three-Pole

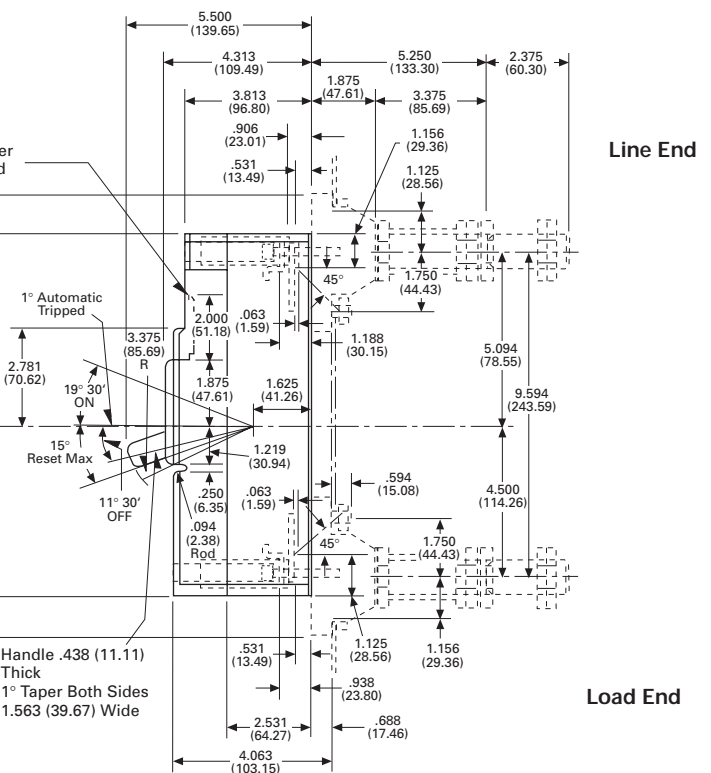
# Moulded Case Circuit Breakers Engine Generator LG 450-600 Amperes

## Type LG Three-Pole

### Front View



### Side View





**Moulded Case Circuit Breakers, LG Engine Generator**  
**Type LG Three-Pole**

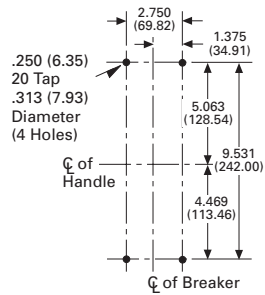
**Drilling Plans**  
**For Mounting Bolts**  
 (Front Connected Terminals)

**For Rear Connected Studs**  
 (Insulated Panel)

**For Plug-In Block**

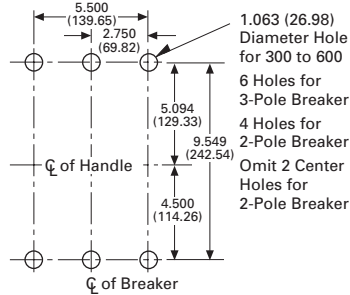
**Front Cover Cutout**

**Line End**



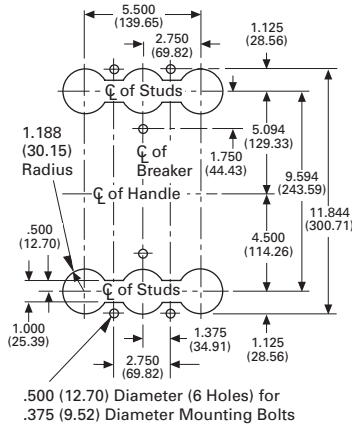
**Load End**

**Line End**

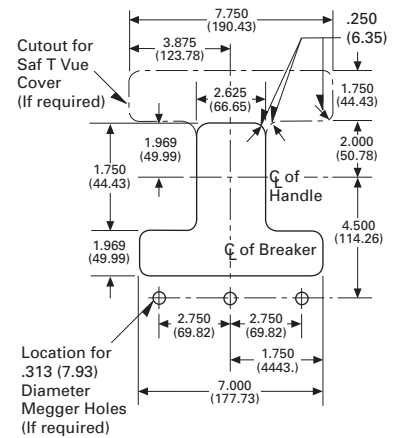


**Load End**

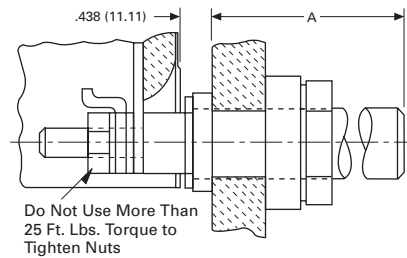
**Line End**



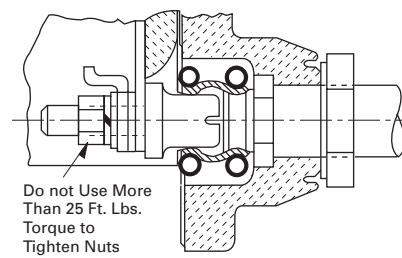
**Load End**



**Rear Connected Studs**



**Plug-In- Adapter Kit**



**Terminal Arrangements**

**Copper Cable Only**  
 (Must be Ordered Separately)  
 Cat. #TA600LA Wire Size (2) 250-500 MCM

**Optional AL/CU Cable**  
 (Must be Ordered Separately)  
 Cat. #TA600LA Wire Size (2) 250-500 MCM

Ampere Rating	Style Number	Thread Size	Dimension A
300 to 600	314C960G07	1-12	5 <sup>15</sup> / <sub>32</sub>
300 to 600	314C960G08	1-12	7 <sup>31</sup> / <sub>32</sub>
300 to 600	314C960G09	1-12	10 <sup>15</sup> / <sub>32</sub>

Poles	Ampere Rating	Kit Style Number	Thread Size
2	300 to 600	313C644G50	1-12
3	300 to 600	313C644G51	1-12

Reproduced from drawing 2608D93

Dimensions in parentheses in millimeters

**Cutler-Hammer**

Five Parkway Center  
 Pittsburgh, Pennsylvania, U.S.A. 15220

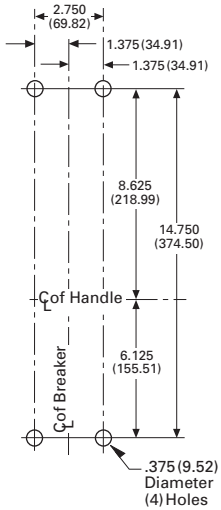




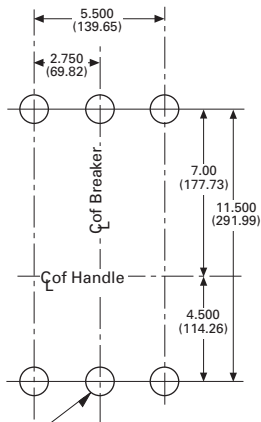


**Moulded Case Circuit Breakers, Type MG Three-Pole**  
**MG 700-800 Amperes**

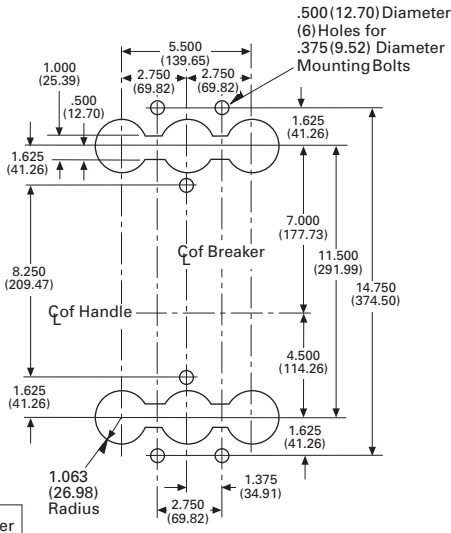
**For Mounting Block**  
 (Front Connected Terminals)



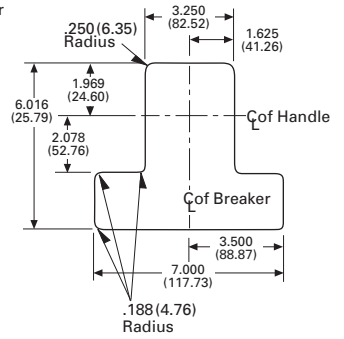
**For Rear Connected Studs**



**For Plug-In Adapter Kit**



**Front Cover Cutout**



.813 (20.63) Diameter Hole for 250 Ampsto 400Amps  
 1.063 (26.98) Diameter Hole for 450 Ampsto 600Amps  
 1.188 (30.15) Diameter Hole for 700 Ampsto 800Amps

6 Holes for 3 Pole Breaker  
 4 Holes for 2 Pole Breaker

Omit 2 Center Holes for 2 Pole Breaker

**Front Connected Terminals**  
 (Must be Ordered Separately)

Amp Rating	Catalogue Number	Wire Size Number of Cables
For Al/Cu Cable		
600	TA700MA1	(2) #1-500 MCM
800	TA800MA2	(3) 3/0-400 MCM
For Copper Cable		
600	T600MA1	(2) 2/0-500 MCM
800	T800MA1	(3) 3/0-300 MCM

**Rear Connected Studs**

2 Required Per Pole (Not Supplied With Breaker)

Stud Ampere Rating	Stud Style Number	Thread Size	Dimension A
250-400	314C960G04	3/4-16	5 <sup>29</sup> / <sub>32</sub>
250-400	314C960G05	3/4-16	8 <sup>13</sup> / <sub>32</sub>
250-400	314C960G06	3/4-16	10 <sup>29</sup> / <sub>32</sub>
450-600	314C960G07	1-12	5 <sup>29</sup> / <sub>32</sub>
450-600	314C960G08	1-12	8 <sup>13</sup> / <sub>32</sub>
450-600	314C960G09	1-12	10 <sup>29</sup> / <sub>32</sub>
700-800	314C960G10	1 1/8-12	5 <sup>29</sup> / <sub>32</sub>
700-800	314C960G11	1 1/8-12	8 <sup>13</sup> / <sub>32</sub>
700-800	314C960G12	1 1/8-12	10 <sup>29</sup> / <sub>32</sub>

**Plug-In Adapter Kit**

1 Kit Per Breaker (Not Supplied With Breaker)

Poles	Ampere Rating	Kit Style Number	Thread Size	Fig.
2	125-600	313C644G27	1 1/8-12	1
3	125-600	313C644G28	1 1/8-12	1
2	700-800	313C544G01	1 1/8-12	2
3	700-800	313C544G02	1 1/8-12	2

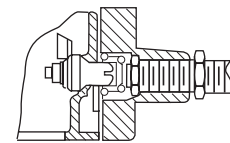
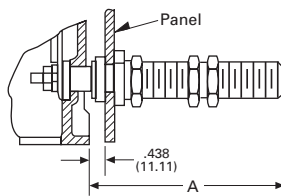


Figure 1

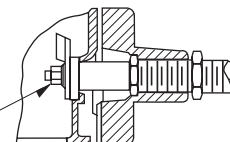


Figure 2



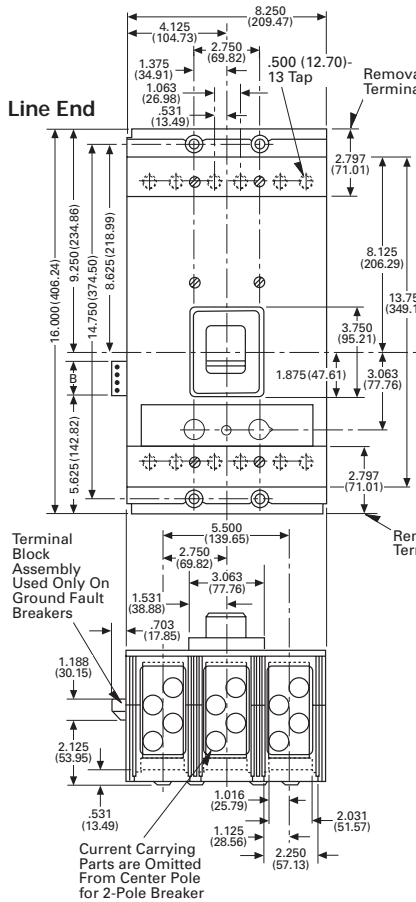
October 1997  
Mailed to: E, D, C/29-100A, 31-400A,  
31-500A

Type NG Three-Pole

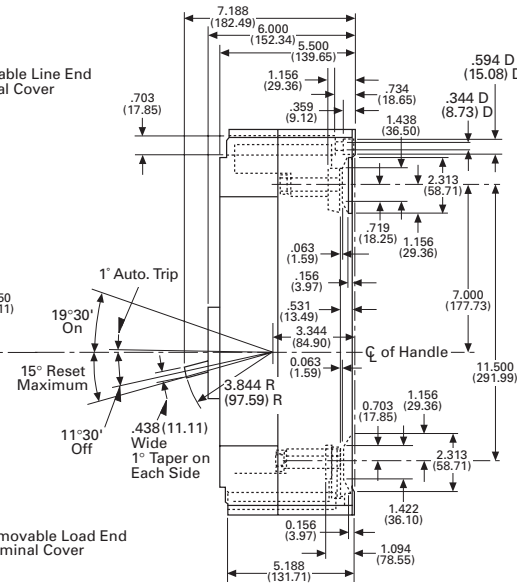
# Moulded Case Circuit Breakers Engine Generator NG 900-1200 Amperes

## Type NG Three-Pole

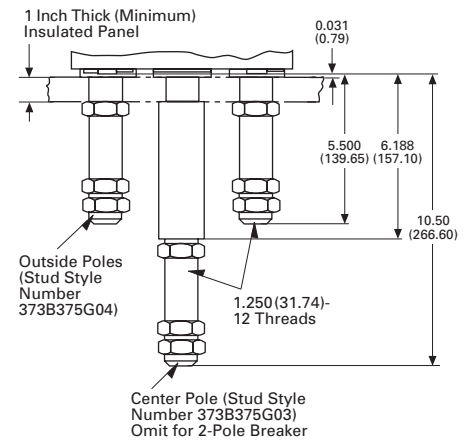
### Front View



### Side View



### Bolted Rear Connected Studs



### Front Connected Terminals (Must be Ordered Separately)

Amp Rating	Catalogue Number	Wire Size	Number of Cables
For Al/Cu Cable			
1000	TA1000NB1	(3) 3/0-400 MCM	
1200	TA1200NB1	(4) 4/0-500 MCM	

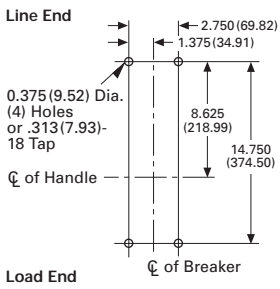
### Load End

	B
2 Terminal Unit	1 <sup>3</sup> / <sub>16</sub>
3 Terminal Unit	1 <sup>9</sup> / <sub>16</sub>

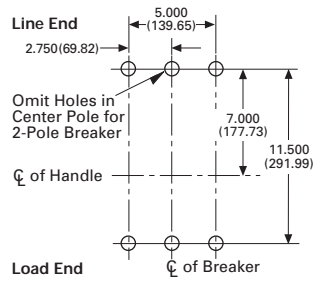


**Moulded Case Circuit Breakers, Type NG Three-Pole**  
 NG 900-1200 Amperes

**Drilling Plans**  
**For Mounting Bolts**

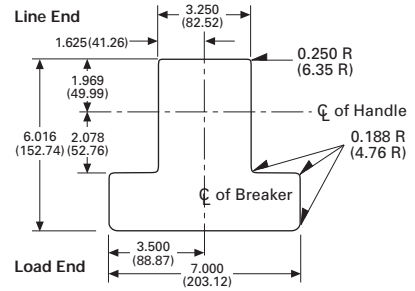


**For Rear Connected Studs**  
**(Insulated Panel)**



Amp Rating	Hole Dia.
700-800	1 <sup>3</sup> / <sub>16</sub>
900-1200	1 <sup>5</sup> / <sub>16</sub>

**Front Cover Cutout**



**Cutler-Hammer**

Five Parkway Center  
 Pittsburgh, Pennsylvania, U.S.A. 15220

