



MEF — Metal-Enclosed Front Accessible Switchgear

Product Focus

The World's Most Agile, Cost-Effective and Space-Efficient Medium Voltage Switchgear

Metal-Enclosed Front Accessible Switchgear



With ratings of 5 and 15 kV with 600, 1200 and 2000 A breakers, Eaton's Cutler-Hammer® Metal-Enclosed Front Accessible Switchgear (MEF) is quite simply the world's most flexible and cost-effective high-performance switchgear available. Offering a wide variety of configurations, standard drawing packages, intelligent integrated trip units, and reduced clearance installation, Eaton's MEF design can significantly reduce a project's overall cost!

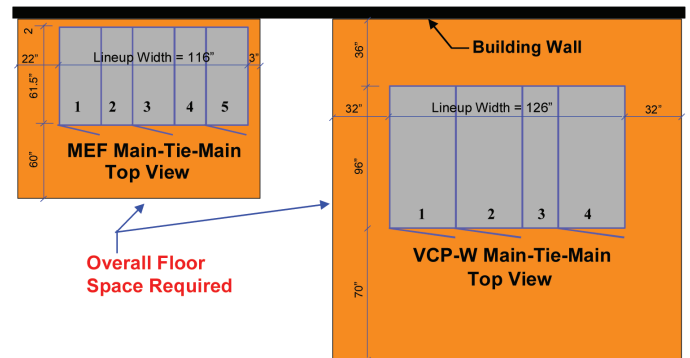
Offering space savings of over 50% within a complete package that can be transported using a fork truck or pallet jack, Eaton's MEF design eliminates the need for cranes and additional construction in retrofit applications. Eaton's portable and space optimized design allows for convenient installation in existing gear rooms simplifying a retrofit installation and significantly reducing a project's cost.

Further reducing your up-front, maintenance, and overall cost-of-ownership, Eaton's VCP-T breaker's available integral self-powering trip unit eliminates the need for an external power source. In addition, Eaton's suite of predictive diagnostic and management accessories can be integrated to maximize mean-time-to-repair.

Features

- Truly front accessible construction — breaker, voltage and control power transformers.
- Flexible dispositions and configurations, conveniently scalable for expansion.
- Flexible applications — main switch, transformer primary and secondary switching.
- General purpose feeder circuit, bus-tie-circuit, generator main.
- Direct on-line starting of medium voltage motors.
- Automatic transfer switching using main-main or main-tie-main configurations.

- Harmonic filter bank switching.
- Main breaker AMPGARD™ front and rear alignment.
- Sized-to-ship; conveniently fits into standard shipping container without an open trailer required.
- Maintenance-free hardware.
- Integrated trip unit options eliminate need for external power source/short circuit protection.
- Independent protection device available with metering and diagnostics.
- Rated for 5 and 15 kV, 1200 and 2000 amperes, 25 and 40 kA.
- UL® listed.
- Designed based on ANSI/IEEE C37.30.3 for metal-enclosed and ANSI/IEEE C37.20.2 for metal-clad switchgear.

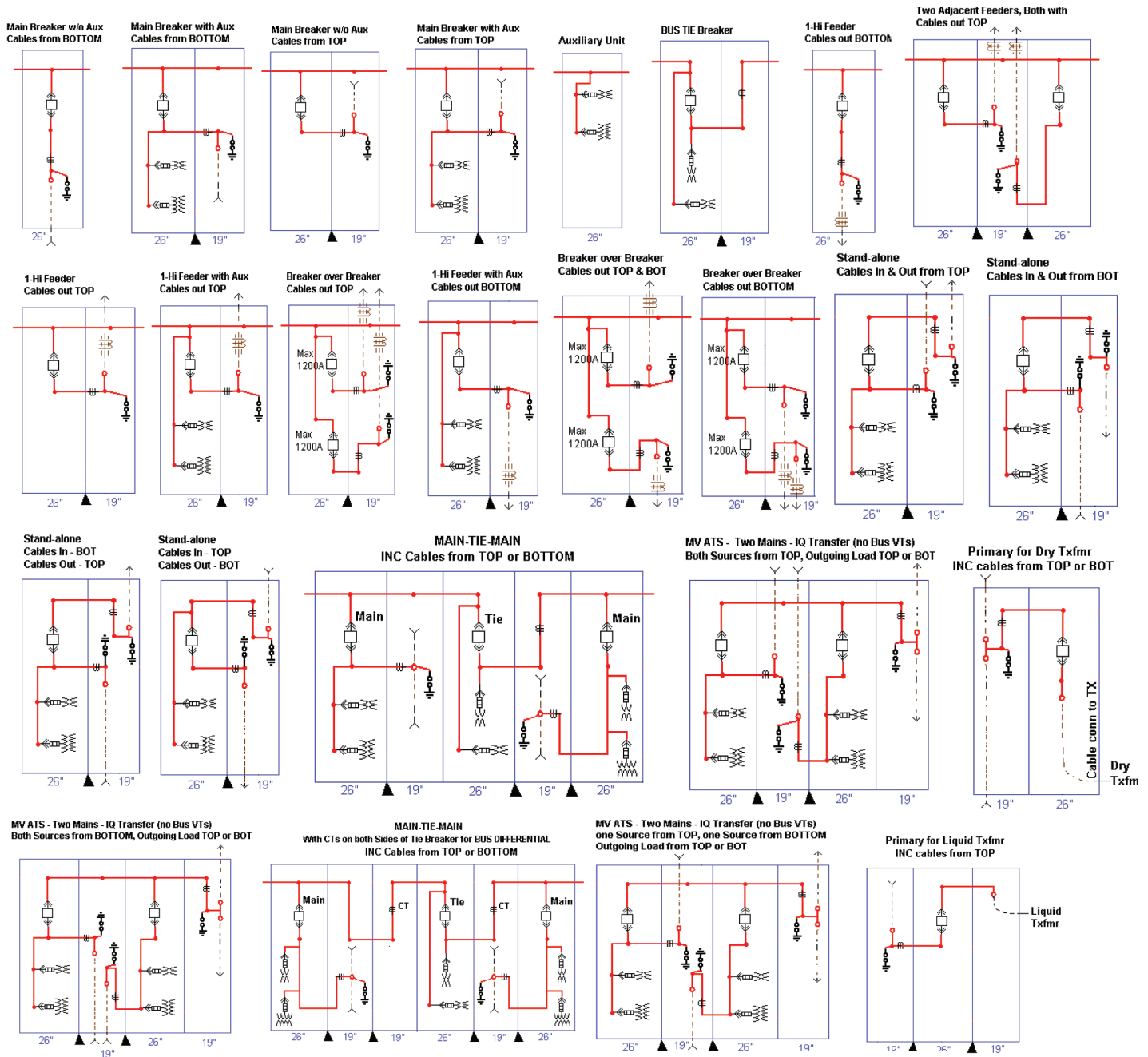


Space Requirements

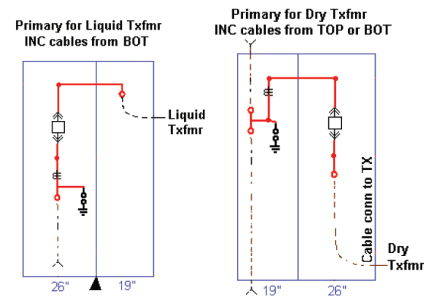
MEF = 120.93 ft² and Standard Metal-Clad = 266.53 ft² ...space savings = 55%!

Available Type VCP-T Vacuum Circuit Breakers Rated per ANSI Standards/ Rated Voltage Range Factor K = 1.0

| CIRCUIT BREAKER TYPE | RATED MAXIMUM VOLTAGE (V) KV RMS | INSULATION LEVEL | | | RATED CONTINUOUS CURRENT AMPERES | RATED SHORT CIRCUIT CURRENT AT RATED MAX. VOLTAGE (I) KA RMS SYM. | MAXIMUM SYM. INTERRUPTING & 2-SECOND SHORT-TIME CURRENT CARRYING CAPABILITY (K*I) KA RMS SYM. |
|----------------------|----------------------------------|---|---|-----------------|----------------------------------|---|---|
| | | 1-MINUTE POWER FREQ. WITHSTAND VOLTAGE KV RMS | IMPULSE WITHSTAND VOLTAGE (BIL) KV PEAK | | | | |
| | | | | | | | |
| 50VCP-T25 | 4.76 | 19 | 60 | 600, 1200, 2000 | 25 | 25 | |
| 50VCP-T40 | 4.76 | 19 | 60 | 600, 1200, 2000 | 40 | 40 | |
| 150VCP-T25 | 15 | 36 | 95 | 600, 1200, 2000 | 25 | 25 | |
| 150VCP-T40 | 15 | 36 | 95 | 600, 1200, 2000 | 40 | 40 | |



- 1 Shipping groups maximum length = 104.00 inches (2641.6 mm).
 - 2 All units are 92.00 (2336.8 mm) height and 61.50 (1562.1 mm) depth.
 - 3 Main bus — 1200 and 2000 amperes.
 - 4 600 and 1200 ampere breakers can be stacked 2 high.
 - 5 Auxiliary shown can be either VTs (2/3) or single-phase CPT (3 or 5 kVA maximum).
 - 6 CTs shown can be either one or two sets, or one set of CTs plus current sensors.
 - 7 BYZ shown can be replaced with zero sequence current sensor.
 - 8 BYZ and surge arresters shown are optional.
- Note:** No shipping splits at positions indicated by triangle.



Cutler-Hammer is a federally registered trademark of Eaton Corporation. UL is a federally registered trademark of Underwriters Laboratories Inc.



Eaton Electrical Inc.
 1000 Cherrington Parkway
 Moon Township, PA 15108
 United States
 tel: 1-800-525-2000
 www.EatonElectrical.com

© 2005 Eaton Corporation
 All Rights Reserved
 Printed in USA
 Publication No. PA02100002E / Z3827
 October 2005